

The background of the entire page is a marbled pattern in shades of gold, brown, and cream. The marbling consists of intricate, swirling veins and blotches, creating a rich, textured appearance. The colors are warm and elegant, typical of high-end stationery or book covers.

# SHOR

Professional

Catalog

seal of beauty

## Brand History

SHOR professional is a family business set in 1999. Despite the relatively short period of time, the company has achieved amazing results, from the first products made in the home kitchen to the entire O.S.A Cosmetics factory and the development of cosmetics for the world's leading brands. But first things first...

### From idea to business concept

The founder of the company, Andrei Shor, is a Master of Chemistry, graduated from the Russian University of Chemical Technology, Moscow, specializing in organic chemistry. For many years Andrei Shor had been working for leading Israeli cosmetics companies.

The history of SHOR professional began in 1999 in an ordinary home kitchen – a place where the founder of the company Andrey Shor created his first author's creams for beauticians.

His overarching goal was to create high quality, safe and at the same time effective beauty and youth preserve cosmetics.

In 2003, the entire Shore family joined the development of skin care products. The son of the founder of the company - Viacheslav Shor assumed one of the leading roles. Now father and son are working together on the creation of innovative products and strengthening of the company's brand.

Viacheslav Shor being a Bachelor of Chemistry and having 15 years of experience in the development, production, and certification of professional cosmetics, in 2017 founded a laboratory center on the basis of the O.S.A Cosmetics factory. The laboratory develops innovative formulas and conducts product testing.



## Brand origination and meaning

Today the SHOR professional brand is synonymous with purity, harmony, and aesthetics. All this is the result of years of work aimed at studying trends and marketing in cosmetic products, creating a concept, and building a brand.

The SHOR professional Seal of beauty logo is our desire to leave an imprint on the history of skin beauty and health.

SHOR professional is the pinnacle of creation of O.S.A Cosmetics Ltd. It embodies colossal experience, professionalism, and boundless love for what we have been doing for two generations.

We believe our story is just beginning! There are still more discoveries ahead for maintaining healthy, glowing, and youthful skin.



# BalanCell

oily / combination skin

Oily and combination skin causes many problems. A noticeable oily sheen, blackheads, acne, areas of inflammation, enlarged pores – all this makes the skin unkempt, spoils the appearance and mood. Although oily skin is associated with adolescence, about 50% of adult men and women suffer from it.

Possible causes:



hormonal fluctuations;



improper skin care;



hereditary predisposition;

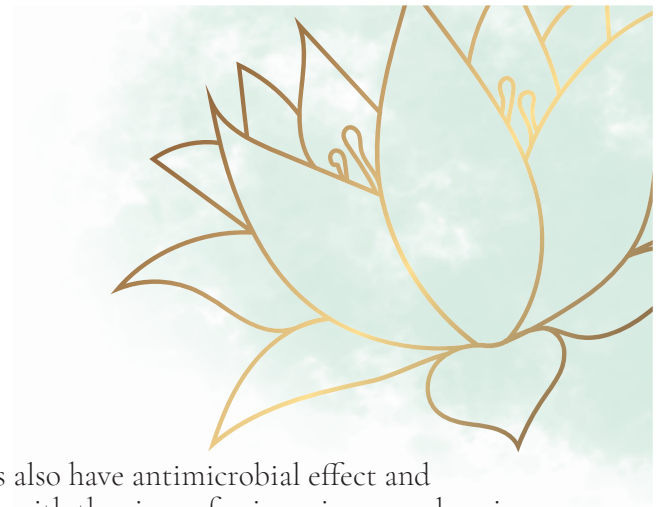


taking certain medications.

But never say die! Proper care and use of high-quality cosmetics will help restore the skin's beauty, well-groomed appearance, and healthy glow. A series of BalanCell products will assist you in this.

## An ideal solution for oily and problem skin

BalanCell is a line of professional cosmetics for daily care of oily and combination skin. A carefully selected composition helps to reduce the activity of the sebaceous glands.



The ingredients also have antimicrobial effect and effectively cope with the signs of aging, give your dermis firmness and elasticity, an even and healthy tone.

BalanCell professional cosmetics will help you to achieve the following results:

- 1 improvement of the sebaceous glands;
- 2 alignment of the dermis relief;
- 3 pore cleansing and shrinking, improvement of complexion;
- 4 skin protection from the negative external factors;
- 5 elimination and prevention of inflammatory elements.

BalanCell products will help will help balance sebum production, as well as return an attractive and well-groomed appearance to facial skin. With such cosmetics, your skin will at all times look healthy and radiant.

## Series active ingredients:

- **Nelupure**

Lotus flower extract is rich in biologically active substances such as flavonoids, quercetin, organic acids, carbohydrates, and peptides. The extract has a pronounced softening and moisturizing effect. The -acids contained in the extract have a mild keratolytic effect, rejuvenating the epidermis. Lotus extract inhibits the action of leptin, a hormone of adipose tissue. Leptin is responsible for sebum synthesis and acne. In Egyptian mythology, the Lotus symbolizes purity, tranquility, and beauty.

Eliminating the oily sheen and unsightly spots of excess sebum secretion, the extract promotes a calm and serene mood, ideal for correcting skin imbalances.

- **Affipore**

Herbal extract of the African medicinal plant – Buchu. The main active component of the extract is the flavonoid called diosmin. It inhibits the action of the enzyme responsible for the production of sebum. The extract helps cleanse and shrink skin pores, mattifies shiny spots on oily skin, thereby improving the overall appearance and texture of the skin.

- **Polyplant 7 Herbs**

A specially selected complex with a targeted action to resolve the problems of oily and combination skin. Rich in saponins, tannins, flavonoids, minerals, and essential oils. Has anti-seborrheic action. Helps prevent acne. Softens the skin and increases its elasticity. The composition includes extracts of yarrow (astringent, soothing, decongestant effects), horsetail (epithelial, healing effects), birch leaves (astringent effects), nettle (antiseborrheic and anti-eczema effect), rosemary and sage (anti-microbial and antioxidant effects), and linden (decongestant and refreshing effects).



- **Apalight**

Hydroxyapatite. Biocompatible with human skin, it has a positive preventive effect against wrinkles. Has a soft focus effect, visually reducing the depth of wrinkles.

Enhances the skin's UV protection. Promotes better penetration of active substances into the skin. Improves the biological elasticity of the skin.

- **Papain**

Papain is a plant enzyme derived from the melon tree. It is rich in amino acids (arginine, glycine, lysine, tyrosine, alanine, etc.) that make up the structural basis of proteins.

Amino acids improve the water and protein balance of the skin, promote healing and biostimulation. Papain has the unique ability to catalyze protein hydrolysis. Helps to delay the aging process, giving the skin firmness and elasticity. Has anti-inflammatory and antibacterial effects, prevents oily seborrhea.

- **Propanediol**

A natural skin-friendly alternative to synthetic glycols. Reduces skin irritation and improves skin hydration.

- **Potassium alum**

Natural minerals. Have anti-inflammatory and disinfectant effects. Reduce the secretion of sweat and sebaceous glands without interfering with their work (prevent pore clogging). Eliminate itching and redness, soothe inflammation.

- **Trikenol Plus**

A standardized herbal complex of tea tree oil and white willow extract. The synergistic mixture of polyphenols, flavonoids, and salicylic derivatives provides an effective antiseborrheic, anti-inflammatory, and keratolytic effect. Trikenol is an antibacterial ingredient that maintains a favorable microflora of the skin surface and suppresses pathogens. Restores the barrier function of the skin. Immunostimulant. Has anti-inflammatory and sebum-regulating effects.

- **Keratolin (Bacillus ferment)**

An active ingredient, enzyme exfoliant. Contains protease - an enzyme that cleaves the peptide bond between amino acids in proteins.

Keratolin is an enzymatic analog of  $\alpha$ -hydroxy acids. Smooths the skin and gently stimulates the process of cell renewal, eliminates dead skin cells. Stimulates the regeneration and renewal of the epidermis.

- **Sucrose**

Has a mild scrubbing effect, cleanses and cares of sensitive skin, promotes skin renewal and hydration, saturates with minerals and vitamins.

- **Curl Relaxer**

A synergistic blend of natural enzymes - bromelain, papain, cysteine, hydrolyzed yeast protein, and Bio-Sulfur - organic sulfur powder, the basis of the BalanCell enzyme peel. Sulfur is involved in the production of collagen and keratin, and has powerful antioxidant effect. Normalizes cellular respiration, promotes skin firmness and elasticity, and helps to synthesize connective tissue.

Yeast protein serves as a powerful energy source that promotes the renewal of skin cells and improves the metabolism of the dermis and epidermis.

- **Tea Tree Oil**

Tea tree oil. A powerful natural antiseptic with antibacterial, antifungal, and antiviral effects. The oil improves the condition of problem skin, relieves redness and puffiness, eliminates itching. In addition to antiseptic properties, tea tree oil tones and restores skin elasticity, stimulating metabolic processes in the deep layers of the skin, and promotes cell regeneration.

- **Zinc Oxide**

Zinc oxide. Has absorbing, pore-tightening effects, masks skin imperfections, protects it from UV radiation. Has anti-inflammatory and antimicrobial effects. Dries out inflammation on the skin, normalizes the keratinization process, prevents blackheads.



## Cleansing Gel for Oily and Combination Skin

# 4010500 / 4010250  
pH 4.0-5.0 / BHA - 0.5%

Anti-inflammatory facial cleansing and moisturizing gel. The antibacterial gel tones up and relieves inflammation, keeps the skin moisturized, contains mild detergents and plant extracts of lotus flowers, birch leaves, yarrow, horsetail, rosemary, sage, and linden.

Salicylic acid, green complex of extracts, and Nehipure and Affipore complexes destroy the protein bridges between the cells of the stratum corneum, accelerate the exfoliation of the stratum corneum of the epidermis, reduce the fat content, and facilitate the process of skin smoothing and renewal. The gel has an anti-inflammatory effect, reduces rashes and prevents new ones, enhances the antimicrobial protection of the skin and suppresses inflammation, regulates the activity of sebaceous glands.

Recommended already from the age of 11-12 years for daily facial cleansing twice a day: in the morning and in the evening, and even three times a day in the summer. The gel is also recommended for daily cleansing of oily and combination skin, acne-prone skin, for seborrheic dermatitis and pustular skin diseases.

**How to:** apply a small amount of gel in your hands and apply it to moistened facial skin. Massage with moistened fingers for a few minutes, then rinse thoroughly with warm water.

**Active ingredients:** birch leaf extracts, yarrow flowers, horsetail, stinging nettle, rosemary leaves, garden sage, linden flowers, hydroxyethyl cellulose, urea, polyquaternium-7, salicylic acid, buchu leaf extract, citric acid, extracts of blue lotus and sacred lotus, citric acid.





## Enzymatic Powder

# 8010250

Enzyme Powder is based on a synergistic blend of natural enzymes – bromelain, papain, cysteine, hydrolyzed yeast protein and Bio-Sulfur, an organic sulfur powder. Enzymes are effective for exfoliation of dead epidermal particles and the following regeneration of new cells. Accelerate various biochemical reactions, in particular the cleavage of proteins, softening of the stratum corneum of the epidermis, and tissue regeneration. Sulfur is involved in the production of collagen and keratin, and has powerful antioxidant effects. Yeast protein serves as a powerful energy source that promotes the renewal of skin cells and improves the metabolism of the dermis and epidermis. Papain also acts as a moisturizing component, as it optimizes the moisture balance of the epidermis.

**How to:** mix powder and activator in a 1:2 ratio, apply on cleansed skin of the face, neck and décolleté, leave for 2-4 minutes, then massage for 2-5 minutes with wet fingers, and rinse with warm water.

**Active ingredients:** kaolin, sodium bicarbonate, maltodextrin, papain, bromelain, yeast hydrolyzate, sodium EDTA, sulfur, agar, Senegalese acacia gum, sodium hydroxide.



## Enzyme Activating Solution

# 7010250

pH 3.0-3.5 / AHA&BHA - 2.5%

A special enzyme powder activating agent based on glycolic acid and protease - an enzyme analog of  $\alpha$ -hydroxy acids, which promotes the cleavage of peptide bonds between amino acids in proteins. Mixing enzyme powder with an activator creates a mild enzyme peeling blend that ideally prepares the skin for atraumatic mechanical cleansing, removes keratin blocking sebaceous ducts, improves the appearance of problem skin, stimulates the process of cell renewal, improves the metabolism of the epidermis, normalizes secretion sebum, eliminates the unpleasant shine of oily skin, helps to cleanse and tighten pores.

**How to:** mix powder and activator in a 1:2 ratio, apply on cleansed skin of the face, neck and décolleté, leave for 2-4 minutes, then massage for 2-5 minutes with wet fingers, and rinse with warm water.

Peeling can be used in two ways:

- Tip
- \*To prepare the facial skin before mechanical cleansing
  - \*To soothe the facial skin immediately after mechanical cleansing

**Active ingredients:** glycolic acid, glycerin, bacillus enzyme.



## Active Comedones Softener

# 5010050

pH 5.0-6.0

A special active agent that opens pores and dissolves blackheads. The pleasant oily texture of the product allows you to massage the skin of the face and makes the deep cleansing procedure more pleasant. Based on the synergistic action of the Trikenol sebum-regulating complex and Lotus extract. Trikenol is an innovative natural active ingredient, a combination of three components known for their antimicrobial effect: White willow bark extract, Terpinen-4-ol and Salicylic acid. Treats acne-prone oily skin and maintains microflora balance. Restores the barrier function of the skin. Immunostimulant.

**How to:** apply the required amount of serum, wait 3-7 minutes, massage facial skin. Additionally sponge up problem skin areas with a cotton swab dipped in an active comedones softener, apply the Hydrating Gel over the top and cover the face with a film for 10 minutes. Further, choose one of two options:

- \* Without rinsing, continue with ultrasonic face cleansing, then rinse, dry the skin and continue with manual face cleansing.
- \* Remove the film by areas, rinse and dry the skin and do manual face cleansing.

**Active ingredients:** salicylic acid, extracts: willow bark, blue lotus flowers, nutritious lotus flowers.



## Hydration Gel

# 5020250

pH 8.5-9.0

The hydrating gel is suitable for all skin types. Provides cold hydrogenation, softening, and loosening of the skin before the mechanical and ultrasonic cleansing of the facial skin. A more comfortable and less traumatic alternative to vaporization. Enriched with the active cleansing complex of lotus flowers - Nelupure™ and plant extracts of birch leaves, yarrow flowers, horsetail, rosemary, linden, nettle, and sage, which help soften the stratum corneum of the epidermis.

**How to:** apply a medium layer on the face before deep cleansing, cover with a film for 10-15 minutes.

**Active ingredients:** urea, glycerin, extracts: birch leaves, yarrow flowers, stinging nettle, rosemary leaves, salvia leaves, linden flowers; extracts of blue lotus and nut lotus flowers.



## Purifying Tonic for oily and combination skin

# 7020500 / 7020250

pH 3.5-4.0 / AHA&BHA - 7.5%

A cleansing, moisturizing, non-comedogenic tonic lotion that ideally disinfects the skin after a deep cleansing procedure, preventing an inflammatory reaction of the skin. Gently cleanses oily, rash-prone combination skin, tightens pores and brightens. Despite the high content of fruit acids, has a mild effect on the skin without causing discomfort or burning. Due to essential oils of lavender and rosemary, has pronounced antiseptic effect. Accelerates skin renewal, improves barrier functions, reduces dryness, irritation, and acne inflammation.

**How to:** apply the required amount of lotion on a cotton pad and wipe the skin of the face, neck, décolleté and/or back.

**Active ingredients:** glycolic acid, lactic acid, extracts of birch leaves, yarrow flowers, horsetail, stinging nettle, rosemary leaves, sage leaves, linden flowers; niacinamide, salicylic acid, sodium hydroxide, buchu leaf extract, citric acid, blue lotus flower and nut lotus flower extracts, lavender oil, rosemary oil.



## Drying treatment Demi makeup

# 8020030

pH 6.0-7.0

A zinc oxide based spot drying and toning agent that acts as an absorber and reflector of ultraviolet radiation.

Has antiseptic effect, promotes wound healing, soothes skin. Sulfur and camphor dry local inflammations, disinfect, and eliminate inflammatory processes.

**How to:** shake thoroughly and apply to previously cleansed skin at the site of local inflammation.

**Active ingredients:** zinc oxide, sulfur, camphor, magnesium aluminum silicate, sodium laureth sulfate, iron oxide, tea tree leaf oil.



## Astringent Mask

# 2010250 / 2010100

A pore-shrinking cleansing mask is an indispensable remedy for oily and combination skin. It restores acid-base balance, contains a high concentration of kaolin and zinc oxide, which contain many trace elements that have a beneficial effect on the skin. Stimulates the production of collagen, increases the firmness and elasticity of the skin, accelerates the metabolic process in cells, absorbs excess sebum and helps to regulate the action of the sebaceous glands. Has astringent effect, dries up the skin, tightens pores, has anti-inflammatory effect. More moderate sebum production does not clog pores, and gradually clears up blackheads. Regular use of the mask accelerates blood circulation, improves skin nutrition. Regular use gives the skin a smooth, clean, and healthy appearance.

**How to:** apply the mask onto a thoroughly cleaned or cleansed face, avoid eye area. Exposure time 15 - 20 minutes, then rinse with slightly warm water.

**Active ingredients:** kaolin, zinc oxide, calamine, extracts: birch leaves, yarrow flowers, horsetail, stinging nettle, rosemary leaves, sage leaves, linden flowers; aluminum alum, buchu leaf extract, citric acid, blue lotus leaf extract and nutritive lotus flower extract.



## Enzyme Exfoliator

# 3010250 / 3010100

Enzyme exfoliating peeling cream (scrub) for facial skin care. It is a good remedy for various skin imperfections: fine wrinkles, pigmentation, for cleansing pores, which is important for acne. The cream effectively softens the skin due to papain and provides gentle exfoliation due to small grains of sugar that dissolve within a few minutes during a facial massage, improves blood circulation, strengthens blood vessels and increases turgor. Maintains the integrity of the integument, does not cause burns, maintains pH of the skin, which is a significant advantage over acid exfoliation. Restores freshness, healthy appearance and beauty to the skin.

**How to:** apply onto clean, moistened skin of the face, neck, décolleté and massage with wet fingers for 3 - 5 minutes until the sugar particles are completely dissolved, rinse with warm water. To enhance the peeling effect, cover with a warm towel.

\*Recommendation: apply Astringent Mask after peeling

**Active ingredients:** sucrose, papain, ethylhexylglycerin, extracts of blue lotus flower nut lotus flower.



## Moisturizing Protective Cream for oily and combination skin SPF-20

# 1010250 / 1010050

A delicate hyaluronic acid-based cream perfectly moisturizes the skin, is quickly absorbed, leaving no sticky feeling on the skin. Actively regulates sebum secretion, reduces the amount of blackheads and inflammatory elements. Evens out the surface and color of the skin, giving it an even matte tone. Restores the skin's hydrolipid mantle, regulates the production of sebum and has beneficial effects thanks to its natural plant extracts, as well as the cleansing complex of lotus flowers, the pore-reducing component – Affipore™. Vitamin E is a powerful antioxidant that protects the surface layer of the skin - the epidermis - from the damaging effects of ultraviolet radiation, prevents lipid peroxidation - the leading cause of damage to cell membranes. Protects against negative environmental influences, makes the texture of damaged skin smoother, restores the walls of blood vessels, capillaries, enhances blood circulation and tissue nutrition. As an antioxidant, prevents the damaging effect of free radicals on our skin cells.

Recommended for oily skin, non-comedogenic, protects the skin from harmful UV radiation.

**How to:** use cream to finish each procedure in the clinic, apply onto clean skin, distribute and let the cream absorb for a couple of minutes.

**Active ingredients:** extracts: birch leaves, yarrow flowers, horsetail, stinging nettle, rosemary leaves, sage leaves, linden flowers; lotus nut flower extracts, buchu leaf extract, citric acid, allantoin.



# BalanCell Protocol

A procedure of deep cleansing and care for combination, oily skin with enlarged pores:

- normalization of the activity of the sebaceous glands;
- deep and long-lasting hydration;
- prevention of inflammation;
- improvement of the external characteristics of the skin (pore cleansing and narrowing);
- protection from adverse environmental effects.

STEP	CATALOG #	PRODUCT	FUNCTION	VOLUME
1	4010500	Cleansing Gel for oily and combination skin	cleansing, moisturizing, toning, anti-inflammatory	500
2a	8010250	Enzymatic Powder	cleansing, skin renewal, softening of the stratum corneum, and gentle removal of dead cells	250
2b	7010250	Enzyme Activating Solution		250
*	3010250	Enzyme Exfoliator		250
3a	5010050	Active Comedones Softener	softening of comedones and sebaceous plugs	50
3b	5020250	Hydration Gel		250
4	7020500	Purifying Tonic for oily and combination skin	antiseptic treatment of the skin, reduction of sebum production and sweating	500
5	8020030	Drying Treatment Demi Makeup	antiseptic skin treatment, local disinfection of inflammations	30
6	2010250	Astringent Mask	narrowing of pores, normalization of the activity of the sebaceous glands, smoothing of skin relief and removal	250
7	1010250	Moisturizing Protective Cream for oily and combination skin SPF-20	moisturizing, UV protection, removal of oily sheen, skin matting	250

## 1. Skin pre-cleansing:

### Cleansing Gel for Oily and Combination Skin

**Goals:** cleansing and moisturizing, toning, reducing puffiness, relieving inflammation.

**How to:** Lather gel onto moistened facial skin and gently massage the face with the tips of moistened fingers in circular movements, rinse with warm water.

## 2. Softening and removal of dead cells:

### Enzymatic Powder

### Enzyme Activating Solution

**Goals:** cleansing, skin renewal, softening of the stratum corneum, and gentle removal of dead cells.

**How to:** dilute and activate in a bowl the enzyme peeling powder with an activator in exact proportions 1:2 (the activation indicator is a characteristic hiss), apply a uniform, medium layer with a brush on the entire face and neck, massage with moistened fingers for a couple of minutes, rinse after 3- 5 minutes with warm water.

## 3. Deep cleansing (pre-cleanser):

### a. Active Comedones Softener

**Goals:** cleansing and softening of comedones and sebaceous plugs.

**How to:** apply an active comedones softener onto the entire face and neck, massage for 2-3 minutes, reapply to problem areas of the face: forehead, nose, cheeks, and chin, do not rinse.

### b. Hydration Gel

**How to:** apply the gel onto the skin with a medium layer over an active comedone softener, cover with film. After 15-20 minutes, start working, removing the film only from the treated area of the face for manual face cleansing.

## 4. Cleansing - pore cleaning:

**Goals:** cleaning pores from surface and deep impurities and grease.

### 4.1 Ultrasonic face cleaning: (at the discretion of the beautician)

**How to:** Perform ultrasonic face cleansing for 7-10 minutes over a hydrating gel (add an Active Comedones Softener if necessary), rinse with water and dry the skin. Proceed with manual face cleansing.

### 4.2 Manual, deep facial cleansing:

**How to:** Perform local cleansing on dry skin of the face, opening the areas to be cleaned, clean pores and release inflamed areas. If necessary, reapply an Active Comedone Softener onto problem areas of the face: forehead, nose, cheeks, and chin.

## 5. Strengthening the antibacterial effect and disinfection:

### Purifying Tonic for oily and combination skin

**Goals:** antiseptic treatment of the skin, reduction of sebum production and sweating.

**How to:** treat the entire skin with tonic with moistened cotton pads. Let it absorb.

## 6. Local disinfection of inflammations:

### Drying treatment Demi makeup

**Goals:** antiseptic treatment of the skin.

**Способ применения:** At the discretion of the beautician, apply a thin layer of drying and toning suspension onto the inflamed areas or to the whole face, let it dry for 3-4 minutes, do not rinse.

- do Jacquet massage as option
- application of high frequency currents (d'Arsonval) is also possible

## 7. Seboregulation, pore closure, and soothing:

### Astringent Mask

**Goals:** effective pore narrowing, skin cleansing excess fat secretions, normalization of the activity of the sebaceous glands, pH balancing, smoothing of skin relief and removal of redness.

**How to:** Apply a thick layer of the mask all over the face. Exposure: 5-8 minutes, after which wash the mask off using napkins and warm water.

## 8. Moisturizing and protection:

### Moisturizing Protective Cream for oily and combination skin SPF-20

**Goals:** moisturizing, UV protection, prevention of hyperpigmentation, removal of oily sheen, skin matting.

**How to:** Lather onto the skin of the face, neck, and décolleté, avoid eye area.

Duration of the session - 60-75 minutes.

Course - 3-5 sessions; 1 session every 3-4 weeks for the first 4-5 weeks, then 1 session every 5-8 weeks.





# Homecare protocol

A procedure of deep cleansing and care for combination, oily skin with enlarged pores:

- normalization of the activity of the sebaceous glands;
- deep and long-lasting hydration;
- prevention of inflammation;
- improvement of the external characteristics of the skin (pore cleansing and narrowing);
- protection from adverse environmental effects.

STEP	CATALOG #	PRODUCT	FUNCTION	VOLUME
1	4010250	Cleansing Gel for oily and combination skin	cleansing, moisturizing, toning, anti-inflammatory	250
2	7020250	Purifying Tonic for oily and combination skin	antiseptic treatment of the skin, reduction of sebum production and sweating	250
3	3010100	Enzyme Exfoliator	cleansing, skin renewal, softening of the stratum corneum, and gentle removal of dead cells	100
4	2010100	Astringent Mask	narrowing of pores, normalization of the activity of the sebaceous glands, smoothing of skin relief and removal	100
5	8020030	Drying Treatment Demi Makeup	antiseptic skin treatment, local disinfection of inflammations	30
6	1010050	Moisturizing Protective Cream for oily and combination skin SPF-20	moisturizing, UV protection, removal of oily sheen, skin matting	50

# BalanCell Homecare:

## Skin pre-cleansing:

### Cleansing Gel for Oily and Combination Skin

**How to:** Wash your face with gel in the morning and in the evening.

## Strengthening the antibacterial effect and disinfection:

### Purifying Tonic for oily and combination skin

**How to:** In the morning and evening, before applying the cream, wipe the skin with tonic-soaked cotton pads, wait 3-4 minutes until completely absorbed.

### Enzyme Exfoliator

**How to:** Exfoliating dead skin cells with an enzyme peeling 2 times a week. Lather a small amount of peeling onto the skin, massage with moistened fingers for 2-3 minutes and rinse with water. Apply the mask.

## Seboregulation, pore closure, and soothing:

### Astringent Mask

**How to:** After peeling, best to apply the mask with an even, medium layer for 4-6 minutes and rinse with water. Finish with cream.

## Local disinfection of inflammations:

### Drying treatment Demi makeup

**How to:** Lather the suspension pointwise onto the inflammation, let it dry for 3-5 minutes, and apply the cream on top.

## Moisturizing and protection:

### Moisturizing Protective Cream for oily and combination skin SPF-20

**How to:** Lather every morning with a thin layer all over the face, neck, and décolleté.







# PropioCare

Problem / acne skin

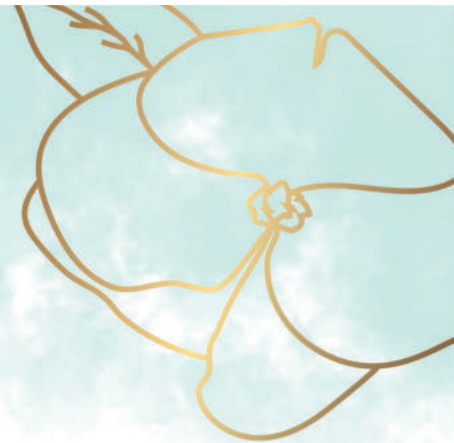
Acne occurs in almost 90% of adolescents. In most cases, over time, it disappears. However, the problem can arise in adulthood, causing aesthetic inconvenience.

## What causes acne?

Possible causes of acne:



-  genetic predisposition;
-  digestive diseases;
-  excessive production of certain sex hormones;
-  unhealthy diet, stress;
-  improper skin care;
-  hyperkeratosis (intensive formation of horny scales on the skin surface, which additionally clog pores that are already clogged with sebum);

But there is good news - you can completely get rid of acne! The PROPIOCARE line of cosmetics will help you with this.



## Say NO to acne

PropioCare is designed for the daily care of skin prone to inflammation and acne and suited for all ages. Products of this range help you to achieve the following results:

-  normalizes activity of the sebaceous glands;
-  relieves signs of inflammation;
-  neutralizes pathogenic microflora;
-  decongesting;
-  prevents scarring;
-  protects the dermis from adverse external factors.

PropioCare cosmetic products are based on carefully selected natural ingredients that regulate the formation of sebum. They eliminate redness and itching, retain sufficient moisture in the cells, and also have antiseptic, soothing, and antioxidant effects. The products stimulate regeneration, cleanse and moisturize the skin. PropioCare ensures gentle and effective care for acne-prone skin. Say STOP to rashes!

## Series active ingredients:

- **Wild pansy extract**

Due to a high content of polysaccharides, flavonoids, phenolic acids, and tannins, wild pansy extract helps to care for problem and acne-prone skin. It has antioxidant and anti-inflammatory effects, thanks to vitamin C, phenolic compounds and rutin, which help neutralize the action of free radicals.

Polysaccharides help to regulate TEPL, thereby helping to moisturize the skin. The extract narrows enlarged pores, stimulates blood circulation, regulates capillary permeability, strengthens elastic fibers.

- **Polyplant oily skin**

A complex of extracts for oily skin, based on extracts of brown algae - fucus, burdock, watercress, ivy, lemon zest, sage and soapwort. This carefully selected combination of herbal extracts has a pronounced therapeutic effect aimed at combating the problems of oily, inflamed skin. The complex is rich in minerals, vitamins, proteins, and fatty acids. They affect the metabolism of fats, thereby reducing its amount in the sebaceous glands. Has moisturizing, antioxidant, wound-healing, antiseptic, antifungal, bactericidal, and anti-inflammatory effects. Prevents the characteristic drying out of oily skin, prevents inflammation, restores the balance of skin microflora.

- **Ac.Net**

Highly effective active agent for oily and acne-prone skin. The synergistic blend of oleanolic and nordihydroguairoacetic acids provides an excellent effect in reducing hyperseborrhea, hyperkeratosis, inflammation, and bacterial growth.



- **Sepicontrol A5**

(Capryloyl glycine, sarcosine, cinnamon bark extract) - a universal active complex for oily and acne-prone skin. Seboregulator (regulates sebum production) and comedolytic (prevents comedones). The substances included in its composition provide a synergistic effect. The amino acid glycine - the main component of the dermal proteins collagen and elastin, strengthens the skin barrier. Sarcosine relieves skin irritation and inflammation, normalizes the skin condition. Cinnamon bark extract contains a high percentage of tannins with tanning properties. Shrinks pores, tones skin cells. Cinnamaldehyde regulates the composition of bacterial microflora and sebum production. Stimulates the immune defense, prevents the growth of bacteria that cause inflammation of oily skin (*Propionibacterium acnes*, *Staphylococcus epidermis*, etc.). Prevents peptide peroxidation, which causes inflammation. Capryloyl glycine is a natural derivative of the amino acid glycine. Prevents the development of gram-positive and gram-negative bacteria, fungi and yeast.

- **D-panthenol**

Panthenol, provitamin B5. Has a healing, moisturizing, smoothing, anti-inflammatory and regenerating effects on the skin.

- **Aloe Vera Extract**

Aloe extract. Contains enzymes, vitamins, polysaccharides, proteins, mineral salts, and microelements. Has anti-inflammatory, bacteriostatic, and moisturizing properties. Tones and strengthens irritated skin. Accelerates the regeneration and formation of new cells.

- **Bisabolol**

Bisabolol is an effective anti-inflammatory ingredient that reduces any irritation to the skin, regardless of its origin. The source of bisabolol is the chamomile herb essential oil. The action of bisabolol is provided by reducing the level of cytokines - one of the main mediators of inflammation. Bisabolol perfectly softens the skin, improves the condition and appearance of dehydrated or damaged hydrolipid mantle, reduces flaking and helps restore skin elasticity. Bisabolol accelerates skin healing processes and enhances skin barrier functions.

A powerful antibacterial and antifungal component that prevents the growth of pathogenic fungi. An anti-allergic agent.

- **Bio-Sulphur**

It is an important building material for the formation of amino acids, enzymes, antioxidants, and vitamins. Increases their biological activity. Has a regulating effect on sebum secretion. Promotes cleansing and antioxidant action.

- **Green Clay (Illite)**

Green clay. By relieving inflammation and peeling, green clay normalizes the sebaceous glands and promotes the regeneration and restoration of skin cells.

Due to high content of phosphorus and magnesium, it nourishes and tones the skin. Green clay has excellent absorbent properties, narrowing pores and clearing them of toxins and dirt. Silver ions contained in green clay have powerful antibacterial effects and prevent the aging process.

- **Skinperf LWG**

Biomaterial-based acid complex. Provides progressive and controlled diffusion of  $\alpha$ -acids. Acts as an intradermal  $\alpha$ -acid reservoir. Provides equivalent exfoliating activity with ordinary  $\alpha$ -acids.

- **Azelaic acid**

Azelaic acid. Active against acne-causing bacteria. Cleans pores from bacteria that cause inflammation and irritation. Gently stimulates cell renewal, promotes rapid skin healing, reduces the likelihood of scarring, prevents melanin synthesis and improves overall skin tone.

- **Phytic Acid**

Фитиновая кислота. Содержится в семенах злаковых, бобовых и масличных культур. Натуральный антиоксидант с хелатирующей активностью. Обладает мягким и глубоким отшелушивающим действием. Стимулирует процесс обновления клеток. Инактивирует фермент тирозиназу.

- **Dermofeel PA**

Phytic acid. Contained in seeds of cereals, legumes, and oilseeds. Natural antioxidant with chelating activity. Has a mild and deep exfoliating effect. Stimulates the process of cell renewal. Inactivates the enzyme tyrosinase.

- **Malic Acid**

Malic acid from the group of alpha-hydroxy acids. Has a moisturizing and exfoliating effect. Improves skin smoothness and tone, helps to reduce wrinkles, heal acne and scars.

- **Mandelic Acid**

Mandelic acid is derived from bitter almonds. It belongs to the group of alpha hydroxy acids. The molecule has a relatively large size, due to which it penetrates and irritates the skin less than glycolic. Accelerates cellular metabolism and exfoliation of dead cells. Does not cause skin redness. Has a brightening effect. Synergistic with salicylic acid, it regulates sebum production and promotes acne treatment.

- **Salicylic acid**

Салициловая кислота из группы  $\beta$ -гидрокислот. Применяется в качестве антибактериального и кератолического актива. Подавляет рост патогенных микробов на коже, способствует отшелушиванию мертвых клеток. Обладает синергетическим действием с  $\alpha$ -кислотами.

- **Salix Alba Extract**

Salicylic acid from the  $\beta$ -hydroxyacids group. It is used as an antibacterial and keratolytic agent. Suppresses the growth of pathogenic microbes on the skin, promotes exfoliation of dead cells. Synergistic with  $\alpha$ -acids.



- **Nicotinamide**

Nicotinamide, a form of vitamin B3. Has anti-inflammatory effects. Improves the barrier permeability of the epidermis. Reduces the rate of sebum secretion. Stimulates collagen synthesis and improves the protective properties of the skin. Reduces transepidermal moisture loss and pigmentation, softens the skin and improves its tone.

- **Camphor**

Camphor. Regulates activity of the sebaceous glands. Provides antifungal and anti-inflammatory effects, helps to control rash and acne.

- **Arbutin**

Arbutin is a natural component of extracts of bearberry, cranberry, mulberry. Has a whitening effect, improves skin immunity, and has an anti-inflammatory effect. Effectively prevents the appearance of age spots in acne treatment.

- **Geranium Oil**

Geranium oil. Soothes damaged sensitive skin due to its antiseptic and anti-inflammatory effects. Activates blood circulation and optimizes the functioning of the sebaceous glands.

- **Lemon oil**

Lemon oil. Has antiseptic, antimicrobial, anti-inflammatory effects. Lemon oil tightens pores, has a tonic effect, improves complexion, and bleaches age spots.

- **Rosemary Oil**

Rosemary oil. Has antioxidant, antiseptic, bactericidal, and healing effects. Contains useful minerals (copper, selenium, zinc, etc.), vitamins A, E, C, PP, group B. Eliminates inflammatory processes. Activates cell regeneration by slowing down oxidative processes.

- **Thyme Oil**

Thyme essential oil. The active component of the oil is thymol, a strong antiseptic. The oil promotes increased blood circulation, removes toxins, relieves itching.

- **Vitamin E**

Vitamin E, tocopherol. Antiseptic. Promotes natural regeneration of skin cells, controls allergic reactions, itching, burning, and redness.

- **Tea Tree Oil**

Tea tree oil. Famous for its antibacterial, antifungal, antiseptic and anti-inflammatory effects.

- **Vitamin A**

Vitamin A. Stimulates cell renewal, slowing down the aging process of the skin. Inhibits the development of free radicals, stimulates the production of collagen and elastin. Reduces the intensity of inflammatory processes caused by increased activity of the sebaceous glands. Brightens the skin by promoting an even distribution of melanin in the skin. Reduces erythema.

- **Oramix NS-10 (Decyl Glucoside)**

A mild surfactant derived from vegetable glucose. Creates a rich, stable foam and maintains the biological balance of the skin.





## Active Cleanser

# 4020500 / 4020250

pH 3.0-3.5 / AHA&BHA - 6%

A gentle cleanser with antibacterial effects. Keeps the skin moisturized, contains mild detergents with low dermatological hardness. Recommended already from the age of 11-12 years for daily facial cleansing twice a day: in the morning and in the evening, and even three times a day in the summer.

**How to:** Recommended to use two times a day, in the morning and evening. Lather a small amount of gel in your hands and apply it to moistened face skin. Massage with moistened fingers for a few minutes, then rinse thoroughly with warm water.

**Active ingredients:** Glycolic, lactic, phytic, and salicylic acids; wild pansy extract; complex of extracts for oily skin (fucus, burdock, medicinal sage, watercress, ivy, lemon zest, soaproot); tea tree oil; lemon peel oil; urea; allantoin.



## MultiAcids Phytic Peel Solution

# 7030500 / 7030250

pH 3.5-4.0 / AHA&BHA - 8%

Disinfectant and cleanser for daily prophylactic procedures, prevents skin inflammation. Perfectly cleanses, tightens pores, brightens and improves facial skin.

**How to:** in case of more oily skin with more intense inflammations treat the entire face with lotion twice a day (morning and evening), for drier skin, as well as adolescents, only once a day in the evening.

**Активные ингредиенты:** Glycolic, phytic, and salicylic acids; wild pansy extract; nicotinamide; complex of extracts for oily skin (fucus, burdock, medicinal sage, watercress, ivy, lemon zest, soaproot); essential oils of tea tree, thyme and geranium; urea.



## MGS Peeling for problematic skin

# 3020050

pH 2.5-3.0 / AHA&BHA - 19%

The product is designed to control the signs of acne and its consequences. It effectively acts on inflamed skin areas, removing redness and irritation. Copes well with getting rid of scars and stagnant age spots left after the inflammatory process. Contains active substances that help to minimize the traumatic effect on the skin, and provide a caring effect and additional elimination of imperfections. Evens out and brightens the skin, kills bacteria, moisturizes skin and enhances its protective properties.

**How to:** apply the product to the prepared skin, avoiding the eye area. Massage with a circular motion, periodically wetting your fingers with water, for 3-6 minutes, reapply the peeling for another 3-5 minutes.

\* **Recommendations:** apply AzeloTreat cream over the peeling and massage for another 3-5 minutes. It is best to use microcurrent therapy and/or iontophoresis, do not rinse.

**Active ingredients:** Mandelic, malic, glycolic, salicylic and phytic acids.



## Breakout Active Gel

# 5030050

pH 5.5-6.0

An active anti-inflammatory gel for problem skin with inflammation. Contains a record amount of active ingredients that help control acne. The use of the concentrate reduces the secretion of sebum, eliminates inflammation and helps to cope with stagnant spots, eliminates redness and acne, pustular skin lesions, promotes cleansing and healing of the skin, and moisturizes.

**How to:** apply the mask to the entire facial skin with a medium layer and leave to absorb it well; it is best to use microcurrent therapy and/or phototherapy, do not rinse.

\* **Recommendations:** Use the gel on cleansed skin, apply a small amount of the product to the problem areas where the rashes are concentrated, and let it absorb, additionally distribute it evenly over the entire face and let it absorb; use in the evening before sleep. A gentle cleanser with antibacterial effects. Recommended already from the age of 11-12 years for daily facial cleansing twice a day: in the morning and in the evening (depending on the severity of rash).

**Active ingredients:** Ac.Net™, Sepicontrol A5™, wild pansy extract; arbutin; nicotinamide; panthenol (vitamin b5); rosemary oil; urea.



## Relax Mask for problematic Skin

# 2020250 / 2020100

This highly effective mask has strong anti-inflammatory effect, helps unclog pores, reduces sebaceous activity, regulates oil production and prevents spreading of bacteria. It is effective in the treatment of acne, youthful acne, reduces inflammation, promotes the absorption of infiltrates, effectively soothes the skin, relieves redness and mattifies oily skin.

**How to:** apply the mask with a medium layer, further, choose one of two options:

- after 5-8 minutes, slightly massage for 2-3 minutes with moistened fingers and rinse with water.
- mask exposure - 11-16 minutes, galvanize over the mask and rinse with water.

**Active ingredients:** Zinc oxide; sulfur; green clay; wild pansy extract; nicotinamide; complex of extracts for oily skin (fucus, burdock, medicinal sage, watercress, ivy, lemon zest, soaproot); essential oil of geranium; camphor.



## AzeloTreat Cream

# 1030050

pH 4.0-4.5 / Azelaic Acid - 15%

The main ingredient of the cream is azelaic acid, which has bacteriostatic effect against *P. acnes* and *St. epidermidis*, reduces the production of fatty acids that contribute to acne formation. Normalizes keratinization in the sebaceous glands, prevents the appearance of blackheads. Has anti-inflammatory and antioxidant effects. Also promotes the process of cell renewal and leveling of the relief and texture of the skin.

Caution: the product may cause slight redness and itching. If the state of discomfort persists after 6-12 days of use, stop using the cream and consult your beautician. Avoid contact with eyes. In case of contact with eyes, rinse with plenty of water.

**How to:** apply the cream in the evening before sleep onto a clean, dry face until completely absorbed.

**Active ingredients:** Azelaic acid; biomaterial-based acid complex; nicotinamide; complex of extracts for oily skin (fucus, burdock, medicinal sage, watercress, ivy, lemon zest, soaproot); essential oil of geranium.



## Active Moisturizing BB Cream SPF-25

# 1020050

A light-base active antibacterial BB cream for complex care of problem skin. Corrects imperfections, evens out skin tone, masks inflammation, has a matting effect, protects the skin from harmful solar radiation, has a high degree of UV protection SPF-25. With prolonged use, helps to reduce the intensity of acne, rash, and prevent the appearance of new rashes. Does not clog pores, does not create a mask effect on the face, keeps the skin free to breathe. The active formula of the cream intensively protects the skin, kills microbes and bacteria that cause rash and acne, has an anti-inflammatory effect, regulates the sebaceous glands, accelerates skin regeneration. Recommended as a makeup base.

**How to:** Lather every morning with a thin layer all over the face.

**Active ingredients:** Salicylic acid; nicotinamide (vitamin B3); panthenol (vitamin b5); wild pansy extract; hyaluronic acid; aloe vera; allantoin.



## Triple Active Day Cream

# 1050250

pH 4.0-5.0 / BHA - 1.0%

A triple action, non-greasy, therapeutic active cream that fully satisfies all the needs of problem skin in the daytime. Contains high concentrations of a therapeutic complex of antibacterial and anti-inflammatory components, regulates sebum production, soothes and protects the skin from harmful ultraviolet radiation (SPF-15). The product balances and soothes the skin, prevents outbreaks of inflammatory processes on oily and problem skin, gives the skin a uniform and smooth appearance. Recommended for cold-weather countries.

**How to:** recommended to use in the clinic as the final stage in combination with microcurrent therapy.

**Active ingredients:** Sepicontrol A5™, salicylic acid; nicotinamide (vitamin B3); soapwort extract; aloe vera; allantoin; bisabolol; sulfur; vitamin A; vitamin E; white willow bark extract; geranium essential oil.



## Multifunctional Balm

# 1040250

pH 4.0-5.0 / BHA - 1.5%

The unique night healing balm cream contains high concentrations of natural active ingredients and has a wide spectrum of action. Removes inflammatory processes due to the high bactericidal, anti-inflammatory and antiseptic properties of the drug; prevents the growth of bacteria in the skin pores; resolves infiltrates; accelerates regeneration and normalizes skin metabolism. Recommended for use as an intensive anti-acne treatment.

**How to:** recommended to use in the clinic in combination with microcurrent therapy.

**Active ingredients:** Sepicontrol A5™, salicylic acid; nicotinamide (vitamin B3); soapwort extract; panthenol (vitamin B5); allantoin; bisabolol; sulfur; vitamin A; vitamin E; white willow bark extract; essential oils of tea tree and thyme.



# Protocol PropioCare

Therapeutic care for problem skin with elements of acne against the background of oily/combination skin, as well as oily, dry and overdried skin:

- normalization of the activity of the sebaceous glands;
- relieving inflammation and gently removing dead cells;
- antiseptic and antimicrobial treatment and skin relief leveling;
- antiseptic and antimicrobial treatment and prevention of inflammation;
- treatment and moisturizing, protection from adverse environmental effects.

STEP	CATALOG #	PRODUCT	FUNCTION	VOLUME
1	4020500	Active Cleanser	deep cleansing, relieving inflammation	500
2	7030500	Multiacids Phytic Peel Solution	disinfection, pre-peeli	500
3	3020050	MGS Peeling for problematic skin	cleansing, skin renewal, softening of the stratum corneum, and gentle removal of dead cells	50
4a	5010050	Active Comedones Softener	softening of comedones and sebaceous plugs	50
4b	5020250	Hydration Gel		250
3*	3020050	MGS Peeling for problematic skin	cleansing, skin renewal, softening of the stratum corneum, and gentle removal of dead cells	50
5	2020250	Relax Mask for problematic skin	antiseptic treatment, disinfection of the skin, rush healing	250
6	5030050	Breakout Active Gel	antiseptic and antimicrobial treatment seboregulation, treatment and moisturizing	50
*7a	1040250	Multifunctional Balm	normalization of sebum production and relieving inflammation	250
*7b	1050250	Triple Active Day Cream	UV protection, antibacterial and anti-inflammatory effect	250
8	1030050	AzeloTreat Cream	normalization of sebum production, recovery and renewal of the epidermis	50
9	1020050	Active Moisturizing BB-Cream SPF25	UV protection, antibacterial and anti-inflammatory effect, skin matting	50

## 1. Skin pre-cleansing: Active Cleanser

**Goals:** deep cleansing and disinfection, relieving inflammation, providing keratolytic action.

**How to:** spread a small amount of the product on moistened skin (avoiding the eye area), massage for 1-2 minutes, then rinse with warm water.

## 2. Deep cleansing, pre-peeling: MultiAcids Phytic Peel Solution

**Goals:** cleansing, skin renewal, softening of the stratum corneum, and gentle removal of dead cells.

**How to:** wipe the face thoroughly with cotton swabs soaked in the solution, with special focus on the problem areas. Do not rinse.

## 3. Peeling, skin renewal, and gentle removal of dead cells: MGS Peeling for problematic skin

**Goals:** cleansing and seboregulation, treatment, keratolytic action.

**How to:** apply the product to the prepared skin, avoiding the eye area. Massage with a circular motion, periodically wetting your fingers with water, for 3-6 minutes, rinse with warm water. Reapply the peeling for another 3-5 minutes.

### \* Recommendations:

Apply AzeloTreat cream over the peeling and massage for another 3-5 minutes.

## Deep cleansing, at the discretion of a beautician (BalanCell series)

### 4-a Active Comedones Softener

### 4-b Hydration Gel

**Goals:** softening sebaceous plugs and cleansing pores.

**How to:** apply an active comedones softener onto the entire face and neck, massage for 2-3 minutes, reapply to problem areas of the face: forehead, nose, cheeks, and chin, do not rinse. Apply the hydrating gel with a medium layer, cover with film for 15-20 minutes, start working, removing the film only from the treated area of the face.

\*If needed, pat dry your skin with a cotton swab soaked in peeling (MGS Peeling for problematic skin or in Multiacids Phytic Peel Solution) to provide keratolytic effects.

## 5. Seboregulation, pore closure, and soothing:

### Relax Mask for problematic Skin

**Goals:** soothing, skin cleansing excess fat secretions, normalization of the activity of the sebaceous glands, pH balancing, smoothing of skin relief and removal of redness.

**How to:** Apply a thick layer of the mask all over the face. Exposure: 5-8 minutes, after which wash the mask off using napkins and water.

\*application of high frequency currents (d'Arsonval) is also possible point-wise to inflamed areas, over the mask.

## 6. Strengthening the antibacterial effect and disinfection:

### Breakout Active Gel

**Goals:** soothing, removing irritation, improving microcirculation, moisturizing, treatment.

**How to:** apply the gel with a medium layer; it is best to perform microcurrent therapy or iontophoresis with any available device.

\*for overdried skin, additionally apply Olive Recover Cream for sensitive skin on top with a thin layer, paying special attention to the areas of rashes.

## 7. Local disinfection of inflammations:

(best recommended for oily skin; do not apply on dry skin):

### AzeloTreat Cream / Крем АзелоТрит или Multifunctional Balm

**Goals:** antiseptic treatment of the skin, moisturizing, seborregulation, treatment, keratolytic action.

**How to:** apply the cream with an even layer, do not rinse, continue with an alginate mask.

#### 7.1 Continue with ultraphonophoresis (at the discretion of the beautician):

\*During the ultraphonophoresis session, add BreakOut Active Gel (Active anti-inflammatory, regenerating gel) as needed.

Ultraphonophoresis - exposure to a sensor that generates ultrasonic waves with a frequency of 800-3000 kHz and an intensity of 0.05-2 W/cm<sup>2</sup> in a continuous mode or 0.1-3 W/cm<sup>2</sup> in a pulsed mode. It is carried out by means of light linear or circular movements along the skin surface at a speed of 0.5-2 cm/sec for 5-20 minutes.

There may be short-term delays in sensor movement, where needed.

\* Gradual change in the power and frequency of ultrasound waves during the ultraphonophoresis session. This facilitates the penetration of the active ingredients used to different depths.

\* To achieve the effect, a course of 5 to 8 sessions with one-week interval is recommended. The effect is noted after 3-5 sessions. A repeated course of phonophoresis is recommended in 3-5 months.

## 8. Moisturizing and soothing:

### Альгинатная маска

**Goals:** soothing, deep moisturizing.

**How to:** apply the Alginate mask diluted with cold water to the frame made of a wet gauze mask with an even, dense layer, after 10-13 minutes remove the mask and its residues with warm water.

## 9. Protection and moisturizing:

### Active Moisturizing BB Cream SPF-25

**Goals:** moisturizing, UV protection, regulation of the sebaceous glands, removal of oily sheen (matting effect).

**How to:** apply the product onto the skin of the face, neck, and décolleté, avoid eye area.

Duration of the session - 40-60 minutes.

Course - 5-10 sessions (depending on the severity of acne); 1 session per week for the first 5-6 weeks, then 1 session in a month.



# Homecare protocol

Therapeutic care for problem skin with elements of acne against the background of oily/combination skin, as well as oily, dry and overdried skin:

- normalization of the activity of the sebaceous glands;
- relieving inflammation and gently removing dead cells;
- antiseptic and antimicrobial treatment and skin relief leveling;
- antiseptic and antimicrobial treatment and prevention of inflammation;
- treatment and moisturizing, protection from adverse environmental effects.

STEP	CATALOG #	PRODUCT	FUNCTION	VOLUME
1	4020250	Active Cleanser	deep cleansing, relieving inflammation	250
2	7030250	Multiacids Phytic Peel Solution	disinfection, pre-peeli	250
3	5030050	Breakout Active Gel	antiseptic and antimicrobial treatment seboregulation, treatment and moisturizing	50
4a	1030050	AzeloTreat Cream	normalization of sebum production, recovery and renewal of the epidermis	50
4b	1020050	Active Moisturizing BB-Cream SPF25	UV protection, antibacterial and anti- inflammatory effect, skin matting	50
5	2020100	Relax Mask for problematic skin	antiseptic treatment, disinfection of the skin, rush healing	100

**Skin pre-cleansing:**  
**Active Cleanser**

**How to:** spread a small amount of the product on moistened skin (avoiding the eye area), massage for 1-2 minutes, then rinse with warm water.

**Deep cleansing, pre-peeling:**

**MultiAcids Phytic Peel Solution**

**How to:** wipe the face thoroughly with cotton swabs soaked in the solution, with special focus on the problem areas. Do not rinse.

**Local disinfection of inflammations:**

a. For more oily skin:

**AzeloTreat Cream**

**How to:** every night before sleep, apply the cream all over the face until completely absorbed.

**Strengthening the antibacterial effect and disinfection:**

b. For drier or teenage skin:

**Breakout Active Gel**

**How to:** every night before sleep, apply the gel all over the face until completely absorbed.

**Protection and moisturizing:**

**Active Moisturizing BB-Cream SPF25**

**How to:** apply every morning with a thin layer all over the face.

\* **Recommendations:** In case additional moisture is required, apply BreakOut Active Gel before applying the Active BB Moisturizer SPF-.25.

**Seboregulation, pore closure, and soothing:**

**Relax Mask for problematic skin**

**How to:** 2- 4 times a week, apply a thick layer of the mask all over the face, after 5-8 minutes rinse with water.

\* **Recommendations:** in case of repeated severe point inflammations, apply locally a gel (BreakOut Active Gel) and a mask (Relax Mask for problematic skin) over the inflammation overnight, rinse with water in the morning.

# HydroProtect

dry / dehydrated skin

HydroProtect - professional cosmetic products for restoring the hydrolipid balance, improving tone, increasing elasticity, and smoothing the skin relief.

## Safe composition

The HydroProtect family is based on a synergistic blend of innovative ingredients:



Aqua Shuttle;



Hydromanil;

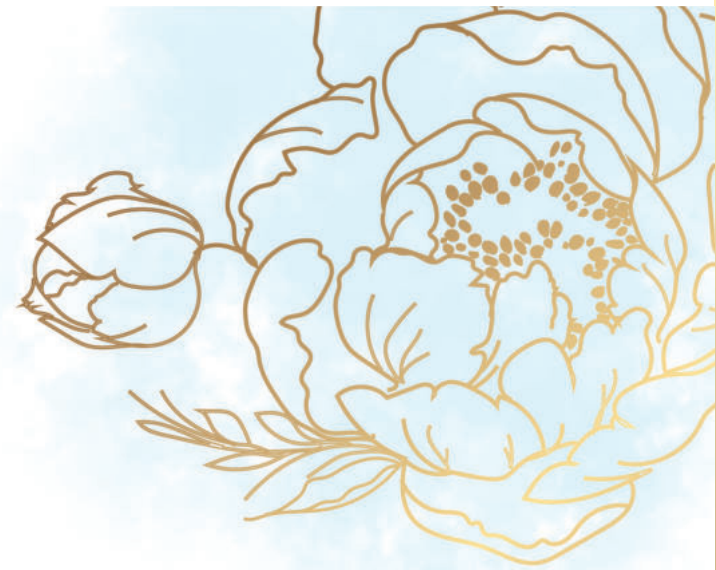


a complex of herbal extracts with moisturizing effects.

Moisture is a vital component for the proper functioning of the skin.

It ensures the integrity and flexibility of the stratum corneum, the correct course of all processes in the epidermis. With low moisture level skin becomes dry, fragile, and prone to flaking. Excessive dryness can lead to damage - minor injuries or wounds that compromise the protective function of the skin.

Dry skin tends to form fine lines, wrinkles, dark spots, and uneven skin tone. And in general, it ages faster than normal dermis.



## Effects and efficiency

The main goal of the product is to eliminate skin dryness by optimizing the level of water and lipids in the stratum corneum. This is achieved as follows:

- 1 creating a protective film on the skin surface, which slows down the evaporation of moisture and prevents transepidermal water loss;
- 2 restoration of the natural ability of the dermis to attract, retain, and distribute moisture;
- 3 activation of the synthesis of protein compounds and special water channels of cell membranes (aquaporins);
- 4 restores the epidermal barrier;
- 5 increased water content in skin cells;
- 6 improvement of the skin appearance and texture due to emollients.

HydroProtect will provide your skin with quick recovery and deep hydration, as well as maintain its youthfulness, health and attractiveness.

## Series active ingredients:

- **Polyplant Moisturizing**

A complex of extracts of mountain arnica, ivy, black elderberry, mallow, linden, cucumber and wall pellitory. The complex is rich in vitamins B, C, and E, antioxidants, essential oils, flavonoids, rutin, organic acids and minerals. It has an excellent moisturizing effect, gives the skin elasticity, tones the skin, increases its immunity, helps to eliminate edema and smooth the skin relief, has anti-inflammatory and wound-healing effects.

- **Hydromanil™**

The product is based on the Peruvian plant – Tara. The seeds of this plant are 80% polysaccharides called galactomannans. These natural moisturizing particles keep the stratum corneum hydrated. Galactomannans remain on the stratum corneum and are responsible for an immediate filmic moisturizing effect that restores brightness, elasticity and a uniform appearance to the skin. Polysaccharides limit the evaporation of water and, in addition, retain the water that is part of the cosmetic. Hydromanil also has an internal effect on the skin. The oligosaccharides contained in hydromanil penetrate from the outer surface of the stratum corneum, which leads to the accumulation of moisture, reduces skin exfoliation and improves the appearance of the skin.

- **Detoskin™**

A synergistic combination of the beneficial properties of peony extract and natural polysaccharide from Yucca plant extract. Increases collagen synthesis, organizes the internal structure of the skin. Strengthens the thickness of the epidermis by increasing the area of the skin fibers. Contributes to a significant reduction in the number and depth of wrinkles. Evens out skin microrelief and tone, strengthens skin elasticity. Promotes detoxification and skin rejuvenation. Protects against the harmful effects of blue radiation from screens.



- **Aqua Shuttle™**

An intensive moisturizing complex based on the molecular structure of diatoms. Provides the encapsulation of water-soluble active ingredients and their sustained release on the skin. The unique delivery system provides instant, intense, and long-lasting skin hydration, penetration of water-soluble ingredients into the stratum corneum and deeper layers of the skin. The prolonged moisturizing effect is achieved through the structure of diatoms with nano-reservoirs, which gives a gradual release of the encapsulated active ingredients onto the skin. The use of nanotechnology makes it possible to break down the active components into microbubbles and deliver them to the dermis using liposomes and nanosomes that act at the cellular level.

- **Cafeisilane C2**

A combination of caffeine, alginic acid, and organic silicone. Acts as an anti-inflammatory, firming, moisturizing, and lipolytic agent. Strengthens lymphatic drainage, inhibits the formation of triglycerides and their filling in adipocytes. Caffeine promotes the transformation of adipose tissue, stimulates the breakdown of fatty acids and lymphatic drainage. Strengthens blood supply to the upper layers of the skin, accelerates cell proliferation and regeneration of the skin. Alginic acid, derived from brown algae, belongs to the class of high molecular weight polysaccharides. Able to absorb large amounts of fluid and enhance lymphatic drainage. A powerful antioxidant, helping to eliminate toxins and heavy metals from the body. Helps to restore the structure of the epidermis and smoothes fine wrinkles.

- **Cobio-Phytonic**

A synergistic blend of herbal extracts of hamamelis, arnica, horse chestnut, ruscus (butchery) and the flavonoid - hesperidin methyl chalcone. Improves blood circulation, has anti-inflammatory, antioxidant, and anti-edema effects, significantly improves the condition of the periorbital skin (reduces periorbital puffiness, eliminates dark circles and wrinkles).

- **DMAE**

Dimethylaminoethanol is an organic compound that, when entered the body, turns into acetylcholine - a neurotransmitter or neurohormone responsible for the transmission of a nerve impulse. Low level of acetylcholine leads to a decrease in tissue and muscle tone, and hence wrinkles and sagging skin. As a result of the conversion of DMAE into acetylcholine, the skin elasticity and its appearance improve, and the synthesis of collagen and elastin is enhanced.

DMAE has an antioxidant effect, stabilizes cell membranes, replenishes the collagen damaged by free radicals, and rejuvenates the skin at the cellular level. DMAE promotes slight vasodilation in the dermis. This improves the condition of the epidermis and dermis, moisturizes all layers of the skin. The lifting effect of the dermis is improved, the number and depth of wrinkles are reduced.

Unlike botulinum toxin, DMAE does not paralyze muscles but achieves the tightening and long-term lifting effect by stimulating muscle tone.

- **SESAFLASH™**

Hydrolyzed sesame protein. Has an immediate lifting, smoothing and moisturizing effect. Improves the appearance and condition of the skin.

- **SEPIlift™ DPHP**

Biopeptide. A small amino acid, it easily penetrates into the deep layers of the skin and launches collagen synthesis, promotes the compaction of its fibers, long-term moisturizing effect and strengthening of the skin, supports its barrier functions. A powerful antioxidant.

- **Matrixyl™ 3000**

An active complex consisting of two peptides. By connecting with certain skin receptors, Matrixyl activates the processes of formation of components of the extracellular matrix (collagen, elastin, fibronectin and glycosaminoglycans), which leads to smoothing of wrinkles, thickening of the epidermis, increasing skin moisture, improving its elasticity and firmness.

- **Hyaluronic Acid**

The main component of the extracellular matrix. High and low molecular weight hyaluronic acid improves the appearance of dry or damaged skin, reducing flaking and restoring elasticity, and smoothes wrinkles. Compared to other natural and synthetic polymers, hyaluronic acid is the best to retain water. High molecular weight acid creates a microfilm on the skin surface, prevents transepidermal water loss (TEWL). Low molecular weight acid easily penetrates into the deep layers of the epidermis, absorbs moisture, smoothing and filling wrinkles from the inside.



## Soft Cleansing Foam

# 4030200

A mild and gentle product designed to cleanse the skin from makeup impurities and excess sebum. Contains natural plant ingredients, the Hydromanil complex, which can relieve irritation, cleanse, improve skin color and moisturize it. Helps to reduce the severity of the vascular network in rosacea, some forms of rosacea. Stimulates tissue granulation (the first stage of wound healing) and thus accelerates the skin regeneration process.

Has an antiseptic, antibacterial and anti-inflammatory effect. Best suited for all types, especially dry, dehydrated skin.

**How to:** spread the required amount of the product on moistened skin and massage with wet hands for 1 - 2 minutes. Wash off with warm water.

**Active ingredients:** ivy leaf extract, arnica flower extract, elderberry flower extract, mallow flower extract, linden flower extract, cucumber fruit extract, wall pellitory extract, hyaluronic acid.



## Gentle Make-up Remover

# 7040250

A product for the delicate and gentle removal of even waterproof makeup. Gently and carefully removes makeup even from such sensitive parts of face as eyes and lips, restores the water-salt balance thanks to its composition, based on the synergistic action of herbal ingredients and the Hydromanil complex. Can also be used as a mycelial tonic. The product is suitable for all skin types.

**How to:** moisten cotton pads with the product and wipe your face, including eyes, lips, neck and décolleté.

**Active ingredients:** ivy leaf extract, arnica flower extract, elderberry flower extract, mallow flower extract, linden flower extract, cucumber fruit extract, wall pellitory extract.



## Glycolact Gel Peeling

# 3030250

pH 3.0-3.5 / AHA&BHA - 16%

An AHA/BHA-based product designed to prepare the skin for peeling, for deep cleansing and renewal, well softens the stratum corneum, thereby helping to gently remove dead cells, and also helps to accelerate the process of cell renewal and hydration.

A good preparation for the median peeling. Improves the overall condition of the skin, tightens and gives it a healthy and fresh look. Used in professional salon care programs.

**How to:** apply the product onto dry skin of the face (avoiding the eye area) and neck. Massage with a circular motion for 3 - 6 minutes, periodically wetting your fingers with water. Without rinsing, go to the peeling stage.

**Active ingredients:** glycolic acid, lactic acid, salicylic acid, ivy leaf extract, arnica flower extract, elderberry flower extract, mallow flower extract, linden flower extract, cucumber fruit extract, wall pellitory extract, kojic acid.



## PTL Peeling

# 3040050

pH 2-2.5 / AHA&BHA - 50%

An AHA-based phytic peeling designed to restore and strengthen the lipid barrier, enhance the protective functions of the epidermis to combat free radicals and accelerate cell regeneration, restore the hydrolipid balance of the skin, turgor, and smooth out its relief. A powerful antioxidant that prevents lipid peroxidation, blocks the formation of hydroxyl radicals, and inhibits xanthine oxidation, preventing early signs of aging. In combination with other acids, gives a brightening effect.

**How to:** With 2-3 ml of peeling, do light massage in circular movements for 3 - 5 minutes, periodically wetting your fingers with water. Apply the peeling to the entire face, neck, décolleté and continue without rinsing to the next step. Recommended for use in the clinic in combination with microcurrent therapy.

**Active ingredients:** phytic acid, tartaric acid, lactic acid, glycerin, sodium hydroxide.





## DMAE HydroFlash Serum

# 1080100 / 1080030

A unique serum with an instant and prolonged moisturizing lifting effect smoothes wrinkles, fills the skin with moisture, making it smoother. The serum's effect is based on a combination of active ingredients - DMAE, the Sesaflash tightening complex, hyaluronic acid and the Matrixyl 3000 peptide complex.

DMAE acts as an antioxidant that triggers the overall process of complex skin rejuvenation, regulates muscle tone, provides deep hydration and a powerful lifting effect, protects against free radicals, and also stimulates blood microcirculation. Reduces the depth of wrinkles, significantly smoothes microrelief and prevents the appearance of ptosis by accelerating the production of collagen and elastin.

**How to:** The product is suited both for home care as a serum for cream and in a professional procedure. Recommended to apply to the entire face, neck and décolleté, and impregnate well by iontophoresis and / or microcurrent method, or massage for 4-7 minutes.

**Active ingredients:** hyaluronic acid, palmitoyl tripeptide-1, palmitoyl tetrapeptide-7, dimethylaminoethanol.



## Hyaluronic Hydro Booster

# 5040100 / 5040030

Gel serum based on hydromanil, Aqua Shuttle and hyaluronic acid moisturizing complexes, provides the skin with increased elasticity and firmness, increases skin hydration by 31% in half an hour, stimulates the growth of collagen fibers and the synthesis of hyaluronic acid, reduces roughness, corrects and smoothes wrinkles.

Hydromanil is an active complex consisting of galactomanno oligosaccharides introduced by multicapillary injection into a gel matrix from an extract of the Peruvian plant Tara (Caesalpinia spinosa). The matrix forms a film on the skin surface that instantly moisturizes the skin, protecting it from negative environmental influences. Due to the structure of the matrix, a gradual release of the active substance is ensured, thus, the Hydromanil complex acts from the inside and on the skin surface to achieve a 3D moisturizing effect.

**How to:** The product is suited both for home care as a serum for cream and in a professional procedure. Recommended to apply to the entire face, neck and décolleté, and impregnate well by iontophoresis and / or microcurrent method, or massage for 4-7 minutes.

**Active ingredients:** Aqua Shuttle™, Hydromanil™, hyaluronic acid, laminaria extract, lecithin, diatomaceous earth.



## Aqua-Phytonic Eye Cream

# 1060100 / 106030

The cream has a very delicate and light texture, absorbs well into the skin, leaving no film and a sticky feeling, and promotes skin hydration. Combats small wrinkles - "crow's feet" in the eye area, improves the elasticity of the skin around the eyes. The composition includes such active complexes as Cafeisilane, CobioPhytonic, Detoskin, Sepilift DPHP amino vector. Reduces puffiness and dark circles, as these defects are associated with inflammation and poor blood circulation in the periorbital zone. Suitable for care of skin with damaged barrier function, it helps to significantly improve the condition of the stratum corneum through hydration, as well as by restructuring the intercellular lipid network. Recommended for the care of extremely dry and sensitive skin, reduces flaking and restores its elasticity.

**How to:** apply the product to the skin around the eyes, on top of the serum and let it to absorb. Recommended for a soothing or lymphatic eye massage.

**Active ingredients:** extracts of mallow, horse chestnut seeds, witch hazel leaves, butcher's root, arnica flowers, caffeine, shea butter, hyaluronic acid, tocopheryl acetate, peony root extract, trehalose.



## Hydrolactate Mask

# 2030100 / 2030250

pH 3.5-4.0 / AHA&BHA - 10%

A gentle lactic acid-based mask designed for the care of dehydrated, degraded, and dry skin. Has a keratolytic effect - weakens and breaks the bonds between the cells of the stratum corneum (corneocytes), which leads to uniform and controlled exfoliation of dead skin cells, which predetermine such defects as unevenness, dull gray color and prevent the penetration of active ingredients into the skin. Activates the process of renewal of the epidermis. Helps to level the surface of the skin and smooth out fine mimic wrinkles. The rejuvenating and lifting effect is associated with the ability to stimulate the formation of new skin cells and fibroblasts - cells of the papillary dermis, which are responsible for the production of collagen and elastin. Comprehensively helps to improve skin elasticity and turgor - firstly, by increasing the moisture content in it, and secondly, by strengthening collagen and elastin.

**How to:** massage with with wet fingers for 4-6 minutes and additionally apply the mask in a middle layer on the entire face, neck and décolleté for 10-12 minutes. Rinse with warm water.

**Active ingredients:** lactic acid, castor seed oil (castor oil), castor bean seed oil, Chinese Simmondsia seed oil, sodium lactate, ivy leaf extract, arnica flower extract, elderberry flower extract, mallow flower extract, linden flower extract, cucumber fruit extract, wall pellitory extract, hyaluronic acid.



## Blue Light Shield cream SPF-15

# 1070050 / 1070250

The cream has a pleasant texture, easily spreads over and absorbs into the skin, leaving no feeling of heaviness. The cream provides instant and prolonged deep hydration of the skin thanks to the unique technologies (3D-matrices) Hydromanil and Agua Shuttle, and also smoothes wrinkles, restores skin tone and elasticity and helps relieve irritation. Strengthens the skin by improving the balance of trace elements, prevents the formation of wrinkles and ptosis, and partially helps to cope with the already initial manifestations of aging. Has a moisturizing, softening, healing, stimulating, nourishing, anti-inflammatory and soothing effect. Designed to increase regeneration and local immunity, to care for damaged or "tired" skin, dehydrated, lost its tone and ability to normal regeneration.

**How to:** every morning apply the required amount of cream on the skin of the face, neck and décolleté, on top of the serum.

**Active ingredients:** laminaria extract, diatomaceous earth, ivy leaf extract, arnica flower extract, elderberry flower extract, mallow flower extract, linden flower extract, cucumber fruit extract, wall pellitory extract, hyaluronic acid, peony root extract, trehalose, benzophenone-3.



# Protocol HydroProtect

Therapeutic care for dehydrated/dried skin, skin restoration after deep peelings:

- restoration of the hydrolipid balance;
- deep and long-lasting hydration;
- leveling of skin relief;
- improvement of tone and elasticity;
- strengthening of regeneration processes;
- restoration of the protective functions of the skin;
- protection from adverse environmental effects.

STEP	CATALOG #	PRODUCT	FUNCTION	VOLUME
1	4030200	Soft Cleansing Foam	cleansing, moisturizing	200
2	7040250	Gentle Make Up Remover	cleansing, moisturizing, makeup removal from face, neck, eyes	250
3	3030250	Glycolact Gel Peeling	skin renewal, softening of the stratum corneum, and gentle removal of dead cells	250
4	3040050	PTL Peeling	recovery and renewal of the epidermis, treatment and deep moisturizing	50
5	1080100	DMAE HydroFlash Serum	wrinkle prevention and smoothing, collagen production, light lifting, tiidt	100
6	5040100	Hyaluronic Hydro Booster	deep moisturizing, wrinkle filling, collagen production, light lifting	100
7	1060100	Aqua-Phytonic Eye Cream	smoothing wrinkles, eliminating puffiness and dark circles under the eyes	100
8	2030250	Hydrolactate Mask	lightening, restoration of hydrobalance, elasticity, and firmness of the skin	250
9	1070250	Blue Light Shield Cream SPF-15	UV protection, deep hydration, antioxidant effect	250

## 1. Skin pre-cleansing: Soft Cleansing foam

**Goals:** deep cleansing and moisturizing

**How to:** spread a small amount of the product on moistened skin, massage for 1-2 minutes, then rinse the foam with warm water.

## 2. Make-up removal: Gentle Make-up Remover

**Goals:** face, neck, eyes and lips make-up removal, moisturizing.

**How to:** Thoroughly rub the skin of the face, neck, décolleté and around the eyes with cotton swabs soaked in the product. Do not rinse.

## 3. Deep cleansing, pre-peeling:

### Glycolact gel peeling

**Goals:** cleansing, skin renewal, softening of the stratum corneum, and gentle removal of dead cells.

**How to:** Apply the product to the prepared skin, avoiding the eye area. Massage with a circular motion, periodically wetting your fingers with water, for 3-6 minutes, rinse with warm water.

## 4. Peeling: PTL Peeling

**Goals:** restoration and strengthening of the lipid barrier, strengthening of the protective functions of the epidermis, cell regeneration.

**How to:** evenly apply phytin peeling (2-3 ml of the product) with a brush or gauze swab over the entire skin surface.

**Variant A-** Exposure time - up to 15 minutes (recommended to start with 5-7 minutes, gradually increasing the peeling exposure time). Rinse off thoroughly with cold water. Dry with napkins. Reapply the peeling for another 3-5 minutes, rinse with water.

**Variant B -** Do a light massage in circular movements, wetting your fingers with peeling if necessary, for 3-6 minutes, do not rinse.

## 5. Deep moisturizing and early aging prevention:

### DMAE hydroflash serum

**Goals:** improving the smoothness of the skin, modeling the face contour, lifting.

**How to:** spread the serum over the entire surface of the face, neck, and décolleté, including the area around the eyes.  
Do a light massage for 5-8 minutes, do not rinse.

## 6. Moisturizing, lifting:

### 7. Hyaluronic hydro booster

### Aqua-phytonic eye cream

Aqua-Phytonic eye cream

**Goals:** improving skin texture, increasing skin elasticity and firmness, stimulating the growth of collagen fibers, wrinkle correction and lifting.

**How to:** apply the booster all over the face and neck, apply the eye cream around the eyes and lips, do not rinse, cover with Hydrolactate moisturizing mask.

TIP / Recommended: MICROCURRENT THERAPY - MCT:

It is recommended to conduct microcurrent lymphatic drainage of the face and neck (with electrodes - gloves or a device) for 5-8 minutes over a booster; if necessary, add a couple of drops to the desired areas of the skin. Microcurrents used for cosmetology have the following characteristics: current rate (40-1000 mA) and frequency from 0.1 to 640 Hz. Microcurrent freely penetrates the cells of the body and stimulates normal electrochemical processes. Microcurrents improve metabolic processes, increase the activity of enzymes, accelerate the synthesis of ATP, which promotes tissue regeneration. By stimulating fibroblasts, it activates the synthesis of collagen and elastin, which makes it possible to reduce the depth of wrinkles and restore skin turgor. Acting on the lymphatic and circulatory systems, microcurrents promote lymphatic drainage and venous outflow, reducing skin puffiness and dark circles under the eyes.

## 8. Deep moisturizing and rejuvenation:

### Hydrolactate mask

**Goals:** smoothing wrinkles, eliminating puffiness, deep hydration and skin rejuvenation.

**How to:** apply a thick layer of the mask all over the face. Exposure: 5-8 minutes, after which wash the mask off using napkins and water.

## 9. Moisturizing and protection:

### Blue light shield cream SPF-15

**Goals:** moisturizing, UV protection, smoothing wrinkles, restoring tone and elasticity.

**How to:** apply the product onto the skin of the face, neck, and décolleté, avoid eye area.

Duration of the session - 70-90 minutes.

Course - 5-8 sessions; 1 session per week for the first 5-6 weeks, then 1 session every per month.

# Homecare protocol

Therapeutic care for dehydrated/dried skin, skin restoration after deep peelings:

- restoration of the hydrolipid balance;
- deep and long-lasting hydration;
- leveling of skin relief;
- improvement of tone and elasticity;
- strengthening of regeneration processes;
- restoration of the protective functions of the skin;
- protection from adverse environmental effects.

STEP	CATALOG #	PRODUCT	FUNCTION	VOLUME
1	4030200	Soft Cleansing Foam	cleansing, moisturizing	200
2	7040250	Gentle Make Up Remover	cleansing, moisturizing, makeup removal from face, neck, eyes	250
3	5040030	Hyaluronic Hydro Booster	deep moisturizing, wrinkle filling, collagen production, light lifting	30
4	1060030	Aqua-Phytonic Eye Cream	smoothing wrinkles, eliminating puffiness and dark circles under the eyes	30
5	1080030	DMAE HydroFlash Serum	wrinkle prevention and smoothing, collagen production, light lifting, tiidt	30
6	1070050	Blue Light Shield Cream SPF-15	UV protection, deep hydration, antioxidant effect	50
7	2030100	Hydrolactate Mask	lightening, restoration of hydrobalance, elasticity, and firmness of the skin	100

# HydroProtect Homecare:

## Skin pre-cleansing:

### Soft Cleansing foam

**How to:** in the morning and evening, spread a small amount of the product on moistened skin, massage for 1-2 minutes, then rinse the foam with warm water.

## Make-up removal:

### Gentle Make-up Remover

**How to:** in the morning and evening,, thoroughly wipe the skin of the face, the area around the eyes, neck and décolleté with cotton swabs soaked in the product.

## Moisturizing, lifting:

### Hyaluronic hydro booster

### Aqua-phytonic eye cream

[Aqua-Phytonic eye cream](#)

**How to:** Every night before sleep, apply the booster all over the face, then apply eye cream on top until completely absorbed.

## Deep moisturizing and early aging prevention:

### Dmae hydroflash serum

**How to:** apply every morning, including the area around the eyes, with a thin layer all over the face before a moisturizing cream.

## Moisturizing and protection:

### Blue light shield cream SPF-15

**How to:** Apply onto the skin of the face, neck, and décolleté, avoid eye area every morning.

## Deep moisturizing and rejuvenation:

### Hydro lactate mask

**How to:** 2-4 times a week apply the mask with a dense layer all over the face, including the area around the eyes, for 6-10 minutes, rinse with warm water.



# ReAL-C

Anti-aging

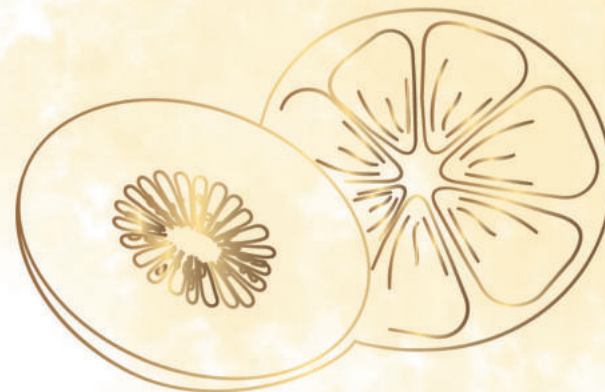
After 30, the skin still remains smooth and beautiful, but at a deep level, the first age-related changes are already occur. Due to the influence of free radicals and the slowing down of cell division processes, the color of the dermis may not become as smooth and radiant as before.

Signs often appear such as pigmentation, dryness, decreased turgor and the appearance of the first mimic wrinkles in the active parts of the face - on the forehead, in the corners of the mouth and eyes. And the influence of negative external factors and frequent stress further aggravate the situation. At this stage, proper skin care should be carried out.

The ReAL-C cosmetic products will help to preserve youth, beauty and radiance of the dermis after 30 years. It is intended for skin care with the first age-related changes.

## ReAL-C simplifies control of age-related changes

This line of products is a combination of retinol, vitamin C and alpha lipoic acid. A special production technology allows preserving the biological activity of the components up to application to the skin, which ensures its high efficiency.



The ReAL-C products will help achieve the following results:

- 1 improving metabolic processes and nourishment of the dermis;
- 2 smoothing the relief and skin tone, improving complexion;
- 3 smoothing wrinkles;
- 4 preventing photo and age-related aging;
- 5 increasing the elasticity and firmness of the skin;
- 6 saturating the dermis with antioxidants, vitamins and energy.

ReAL-C will make your skin shine with flawless beauty, youth and health.

Let yourself be beautiful at any age!

## Series active ingredients:

- **Retinol**

The ingredient is used in the form of retinyl palmitate (vitamin A) and pure retinol, encapsulated in biodegradable capsules. Unique Israeli technology has created a high effective concentration of active retinol. When applied to the skin, the polymer shell of the microcapsule is gradually destroyed, releasing pure retinol. Thus, a prolonged effect of the active ingredient on the skin is achieved and its effective action is enhanced.

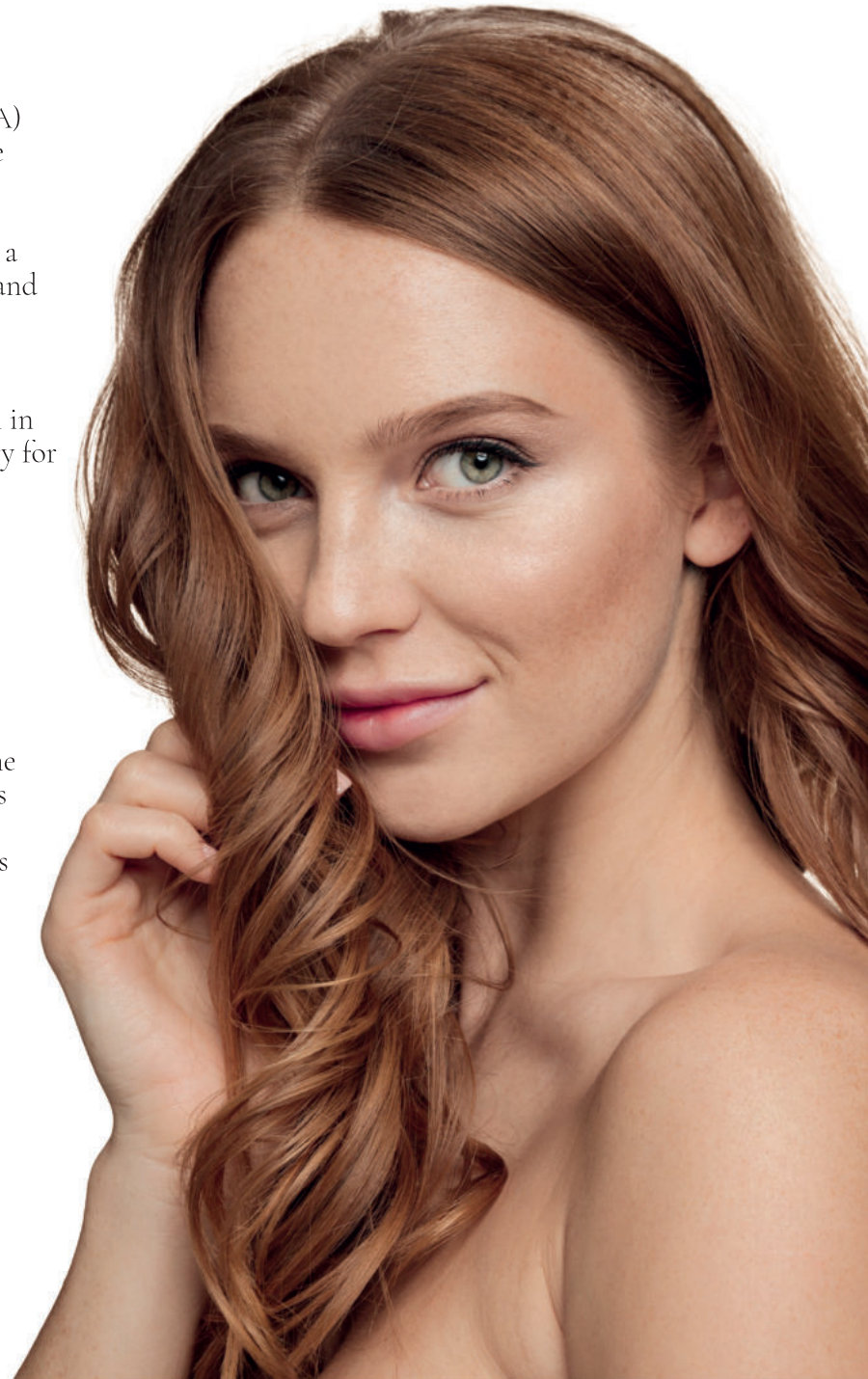
Retinol penetrates well into the deep layers of the epidermis, stimulating collagen synthesis and enhancing the process of moisturizing and nourishing the skin, improves microcirculation in the capillaries (thus, enhancing the delivery of nutrients necessary for skin cells).

- **Alpha lipoic acid**

One of the most powerful antioxidants, protects the skin from free radicals, prevents and reduces the signs of aging and the negative effects of UV radiation. Enhances the activity of antioxidants such as coenzyme Q10, vitamins C and E. Due to the ability to release the energy necessary for cell renewal, accelerates cellular metabolism, protects membranes, and prevents genetic damage to skin cells. As an anti-aging active ingredient, enhances the firmness and elasticity of aging skin, prevents the process of glycation (damage to collagen fibers by glucose metabolites).

- **Vitamin C (as ascorbyl palmitate)**

A compound of ascorbic acid with fatty palmitic acid. The non-acidic form of vitamin C, which gently acts on the skin, helps to protect and moisturize the skin.



- **Vitamin C (as ascorbyl tetraisoalmitate)**

A biologically active stable form of vitamin C – the L-ascorbic acid isomer. Perfectly penetrates the skin, effectively overcoming the skin barrier and releasing pure vitamin C. Vitamin C actively affects all physiological processes in the skin. Effectively stimulates collagen production. A powerful antioxidant, neutralizing reactive oxygen species and preventing lipid peroxidation of cell membranes. Inhibits tyrosinase activity and the formation of excess melanin in the skin. Reduces the destructive effect of UV radiation on DNA cells.

- **Vitamin C (as ascorbyl glucoside)**

Ascorbic acid combined with glucose. A very stable form that converts to vitamin C when applied to the skin. Antioxidant. Effectively removes age spots.

- **Polyplant Fruits**

A blend of various fruit extracts in a balanced combination of active ingredients, designed to provide moisturizing, anti-aging and emollient effects. Consists of raspberry, peach, kiwi, papaya, apple, cucumber and strawberry extracts. Has moisturizing, anti-aging and emollient effects. Carbohydrates and  $\alpha$ -hydroxy acids prevent transepidermal water loss, maintaining the moisture level of the stratum corneum. Vitamin C, which is found in almost all fruits and the complex, enhances antioxidant, wound healing and whitening qualities. Oligosaccharides stimulate collagen synthesis, maintaining collagen integrity and preventing the degradation of the extracellular matrix.

- **Lanablue™**

Blue-green algae extract contained in a special water source with unique nourishing properties. Its outstanding composition - vitamins, amino acids and trace elements - makes it a natural alternative to retinoids without any side effects. Lanablue™ affects keratinocyte differentiation, providing a smoothing effect, thickening of the epidermis and skin regeneration. Clinically proven to effectively reduce wrinkles after 21 days.

- **SKINPERF LWG**

Designed to provide progressive and controlled diffusion of ANA while avoiding the problem of inflammation. Provides the equivalent exfoliation performance of an ordinary AHA after 2 weeks. After 4 weeks, the skin becomes lighter, blemishes, blackheads and acne scars disappear without any tingling or irritation.

- **Gatuline® In-Tense**

Natural oil extract from the Acemella plant (Spilantis Acemella Flower Extract). Stimulates the activity of fibroblasts, increases cellular dynamism and thus reorganizes and tightens collagen fibers. As a result, provides a visible lifting effect.

- **Tens'Up™**

An innovative active ingredient with a pronounced lifting effect. Has both immediate and medium-term effect, thanks to its sustained-release mechanism. Visibly improves the appearance of the skin. Combines lifting and anti-aging effects. The increase in collagen synthesis has a double effect - an immediate improvement in the appearance of the skin and a rejuvenating effect in the long term.

- **Idealift™**

Combats sagging skin and improves gravity resistance. Stimulates the synthesis of elastin and also contributes to the correct and functional architecture of elastic fibers by inducing the most important elements involved in tissue structure. Consists of a natural-to-body lipopeptide.

- **Tangerine oil**

Has pronounced tonic effects. Prevents the deposition of fatty layers, enhances skin immunity, launches regenerative processes in the skin. The aroma of tangerine oil combats depressive mood, relieves anxiety, and helps to find joy.

- **Kojic acid**

Antioxidant, has brightening effects by reducing melanin production. As part of the peeling, helps to exfoliate the skin.

- **Vitamin E**

Tocopherol. Reduces the depth of wrinkles, stimulates collagen synthesis. Prevents age-related pigmentation. Helps to retain moisture in the skin. A powerful antioxidant. Shows synergistic effect with vitamins A and C.

- **Phytic acid**

One of the most effective natural antioxidants. Has a lightening effect on the skin, prevents inflammatory reactions, inhibits the formation of pigment, stimulates the processes of skin renewal.

- **Chamomile extract**

The active ingredient of the extract is Azulene, which has anti-inflammatory, healing, anti-allergic effects. Soothes, softens and makes the skin more elastic. Eliminates dryness and flaking.



- **Hyaluronic acid**

A polysaccharide related to glucosaminoglycans. The main component of the extracellular substance of connective tissues. An important structural element of the skin, contributing to the maintenance of normal moisture balance in skin cells. The biological functions of hyaluronic acid consist not only of a moisturizing effect, but also of a regenerating, antiviral, bactericidal, wound-healing activity.

- **AQUAXYL™**

A 3D hydration concept designed to circulate moisture throughout all layers of the skin and increase hyaluronic acid levels. The skin barrier is strengthened in 24 hours, limiting water loss. As a result, the skin becomes smoother in 28 days, peeling is normalized, and wrinkles are smoothed out.

- **Shea butter**

Has a relatively high content of unsaponifiable fats, including tocopherols, triterpenes, steroids, etc., which determines its antioxidant and regenerative activity and photoprotective properties. Penetrating into the upper layers of the skin, the butter saturates them with useful fats and also retains moisture. Stimulates the production of collagen, which is responsible for the softness and elasticity of the skin.

- **Rosehip oil**

Oil is rich in essential fatty acids that have an important effect on regulating skin firmness and restoring moisture. A useful component for formulating cosmetic products with regenerative activity on the surface layers of the skin and for reducing all types of scars.



- **Lemon oil**

An active cosmetic additive with antibacterial, immune-strengthening and wound-healing properties. Promotes the reduction of enlarged pores, eliminates sagging skin, bleaches age spots, removes vascular patterns, eliminates edema, excessive skin oiliness, inflammation and keratosis, regulates blood circulation, strengthens the walls of blood vessels. The bright scent of lemon triggers positive emotions, helps to relief stress.

- **Orange oil**

Has been known as an excellent remedy for restoring skin elasticity, helping to reduce wrinkles and brightening the skin. The delicate scent of orange oil helps to improve mood, relieve fatigue and get rid of internal discomfort.

## Multifruit Cleansing Gel

# 4040500 / 4040250  
pH 4.0-4.5 / AHA&BHA - 4%

The multifruit cleansing gel contains fruit acids and fruit extracts. The product foams easily with water. Cleanses the skin well, dissolving dead cells and removing makeup, even from delicate areas such as eyes and lips.  
The product is suitable for all ages and skin types, with signs of aging.

**How to:** apply the required amount of gel to a moistened face and carry out a light massage in circular movements with wet fingers and rinse with warm water.

**Active ingredients:** Glycolic acid; lemon acid; fruit extracts: raspberry, strawberry, kiwi, apple, peach, papaya, cucumber; urea; allantoin.



## Fresh Toner Vitamin C

# 7050500 / 7050250

pH 3.5-4.0 / AHA&BHA - 6%

A refreshing toner with a pleasant aroma for exfoliation of dead cells based on fruit extracts. Enriched with vitamin C and contains AHA and BHA acids, intended for cleansing, moisturizing and pre-peeling of the skin for further absorption of active ingredients, restores the acid-base balance, brightens and refreshes the skin.

**How to:** wipe the face, neck, décolleté with cotton pads soaked in toner. If necessary, repeat and leave for 3 minutes to absorb, proceed to the next step of the procedure.

**Active ingredients:** Glycolic, salicylic, and citric acids; ascorbyl glucoside (vitamin C); fruit extracts: raspberry, strawberry, kiwi, apple, peach, papaya, cucumber; orange peel essential oil; urea.



## Retinol Yellow Peeling

# 3050050

pH 2.5-3.0 / AHA&BHA - 20% / Ретинол - 2%

An atraumatic peeling based on the synergistic action of retinol and glycolic, phytic, and kojic acids. Gently removes dead cells and evens out the skin's relief, restores and regulates the water-lipid balance of the skin. Regulates the processes of differentiation, cell proliferation and intercellular communication. The retinol molecule, getting inside the cell, binds there with the "sensors" of the nucleus - as a result, individual parts of the cell genome are activated or slowed down, which has a positive effect on the function of cells and skin. Among the main benefits of yellow peel are minimal skin damage, a shorter recovery period and a low risk of complications. In addition, retinol acts as a natural moisturizer, attracting moisture and increasing its content in the epidermis. The effect of yellow peeling on the skin during exfoliation does not give damage to living cells, burns, protein coagulation: the interaction between retinol and the biochemical structures of the skin is based solely on the connection with the receptors of cell nuclei. The receptors of the nuclei of almost all cells of the dermis and epidermis - keratinocytes, fibroblasts, melanocytes - react to retinol.

**How to:** massage with fingers for 2-4 minutes with peeling and apply the peeling to the entire treated surface of the skin with a brush; let it to absorb well and do not rinse.

**Active ingredients:** Retinol; glycolic acid; phytic acid; kojic acid.



## Vitamin C Firming Serum

# 6010100 / 6010030

An antioxidant serum enriched with vitamin C, alpha lipoic acid, Gatuline In-Tense and rosehip oil. The serum has a delicate silky texture, promotes collagen production and cell regeneration, smoothes and evens skin tone, restores the lipid barrier and the protective function of the skin. Improves skin elasticity, prevents hyperpigmentation, including the formation of age spots. Well suited for everyday use under the cream, as well as an independent makeup product.

**How to:** apply the serum evenly onto the entire surface of the skin of the face and neck, let it to absorb, better use with Jacquet or d'Arsonval massage, do not rinse.

**Active ingredients:** Active ingredients: vitamin C (ascorbyl tetraisopalmitate and ascorbyl palmitate);  $\alpha$ -lipoic acid; vitamin E; rosehip oil; mandarin peel essential oil; oil extract of Akmella oleracea (Gatuline® In-Tense).



## Golden Tense Mask

# 2040250 / 2040100

Antioxidant lifting gel mask. Gently and pleasantly envelops the skin, slightly warming it up. Lifts and smoothes wrinkles, making the skin fresh and radiant. Protects and stimulates the growth of collagen fibers, increases skin moisture, elasticity and firmness, improves complexion. Stimulates the activity of fibroblasts, increases cellular dynamism and, thus, reorganizes and tightens collagen fibers. The increase in collagen synthesis has a double effect - an immediate improvement in the appearance of the skin and a rejuvenating effect in the long term. Combines lifting effect with anti-aging activity.

**How to:** apply the mask onto the entire surface of the face 2 to 4 times a week, including the area around the eyes and neck. Leave for 10-20 minutes, rinse with warm water. In the clinic, best combine with a manual massage with a small amount of mask, reapply the mask with a medium layer on the entire face and cover with an Alginate mask on top for 15-20 minutes.

**Active ingredients:** chicory root oligosaccharide; acetyl dipeptide-1 cetyl ether; hyaluronic acid; vitamin A; vitamin C; fruit extracts: raspberry, strawberry, kiwi, apple, peach, papaya, cucumber, Tens'Up™, Idealift™.





## 3A Renewal Complex

# 1090050

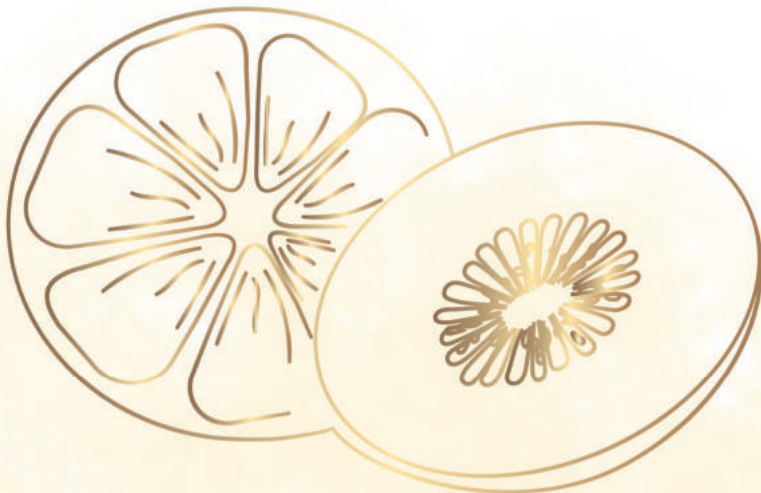
pH 4.0-4.5

The cream promotes cell proliferation (thickening of the skin), improves the barrier function and elasticity of the skin, smoothes wrinkles and makes the skin smoother. The active complex is rich in Retinol both in the form of retinyl palmitate (vitamin A) and pure retinol encapsulated in biodegradable capsules.

Unique Israeli technology has created a high effective concentration of active retinol. When applied to the skin, the polymer shell of the microcapsule is gradually destroyed, releasing pure retinol. Thus, a prolonged effect of the active ingredient on the skin is achieved and its effective action is enhanced. Retinol penetrates well into the deep layers of the epidermis, stimulating collagen synthesis and enhancing the process of moisturizing and nourishing the skin, improves microcirculation in the capillaries (thus, enhancing the delivery of nutrients necessary for skin cells). A powerful antioxidant, has an anti-age effect, promotes the regeneration of skin cells, activates the synthesis of collagen in epithelial tissue and generally reduces the signs of aging.

**How to:** in the evening, apply the cream onto a well-cleansed and dry skin all over the face.

**Active ingredients:** Retinol (encapsulated); retinyl palmitate (vitamin A); blue algae extract; glycolic acid; lactic acid; salicylic acid; vitamin E; allantoin; Aquaxil moisturizing complex.



## Moisturizing cream Vitamin C SPF-25

# 1100250 / 1100050

The cream has pleasant and delicate texture, is suitable for all skin types, has strong antioxidant effects due to the synergistic action of vitamin C, alpha lipoic acid, vitamin E, and rosehip oil. Promotes increased metabolism in cells, protects the cell membrane, prevents damage to the genetic apparatus of skin cells. As an active anti-aging component, acts in several ways: stimulates the growth of fibroblasts in the dermis and, thus, helps to maintain skin elasticity, as well as to rejuvenate aging skin; prevents the process of glycation - damage to collagen fibers by glucose metabolites. Perfectly moisturizes, has protective and moderate anti-inflammatory effect, brightens the skin, a natural antioxidant, cleanses the skin of free radicals, prevents and reduces the signs of aging and negative effects associated with UV exposure. High degree of photoprotection SPF-25.

**How to:** every morning apply the required amount of cream on the dry skin of the face, including eye area, neck and décolleté.

**Active ingredients:** vitamin C (ascorbyl tetraisopalmitate);  $\alpha$ -lipoic acid; hyaluronic acid; rosehip oil; shea butter; extract of chamomile flowers; vitamin E; extracts of raspberries, strawberries, kiwi, apple, peach, papaya, cucumber; allantoin.



# Protocol ReAL-C

Antioxidant, anti-stress, anti-aging program.

The ReAL-C products saturate the skin with energy and antioxidants, stimulate skin regeneration, neutralize the negative effects of free radicals, enhance the synthesis of collagen and elastin, enhance tone and elasticity, and improve skin color and texture.

- saturation of the skin with antioxidants and energy;
- improvement of metabolic processes;
- improvement of tone and elasticity, lifting;
- alignment of the skin relief;
- prevention of age-related and photoaging;
- improvement of complexion.

STEP	CATALOG #	ПРЕПАРАТ	ФУНКЦИЯ	ОБЪЕМ
1	4040500	Multifruit Cleansing Gel	cleansing, skin renewal, makeup and impurities removal	500
2	7050500	Fresh Toner Vitamin C	cleansing, moisturizing, preparing the skin for active ingredients	500
3	3050050	Retinol Yellow Peeling	skin renewal, softening of the stratum corneum, and gentle removal of dead cells	50
4	6010100	Vitamin C Firming Serum	pronounced antioxidant effect, prevention of wrinkle smoothing, increased elasticity, improved complexion	100
5	2040250	Golden Tense Mask	moisturizing, smoothing wrinkles, restoring skin elasticity and firmness, evening skin color, preventing aging	250
6	1100250	Moisturizing Cream Vitamin C SPF25	UV protection, antioxidant effect and deep hydration	250

## 1. Skin pre-cleansing:

### Multifruit Cleansing Gel

**Goals:** removing dead cells, leveling the skin relief, cleansing and renewing the skin.

**How to:** apply a cleanser on a moistened face (including the eye area), massage for 1-2 minutes, rinse with water.

## 2. Deep cleansing, pre-peeling:

### Fresh Toner Vitamin C

**Goals:** skin renewal, pre-peeling, moisturizing.

**How to:** apply with sponges soaked in the product in a circular motion. Do not rinse.

### 3. Peeling: Retinol Yellow Peeling

**Goals:** cleansing and renewing the skin, gently removing dead cells, smoothing the skin relief, preventing aging, skin rejuvenation.

**How to:** Apply the peeling on the entire surface of the face and neck with light circular massage movements, periodically wetting your fingers with the peeling, do not rinse.

### 4. Antioxidant, early aging prevention: Vitamin C Firming Serum

**Goals:** restoration and strengthening of the lipid barrier, strengthening of the protective functions of the epidermis, cell regeneration, wrinkle smoothing, increasing elasticity and improving complexion.

**How to:** evenly apply the serum over the entire skin surface, do not rinse. Do a light massage until completely absorbed. Use d'Arsonval massage, if needed.

### 5. Moisturizing, lifting, rejuvenation: Golden Tense Mask

**Goals:** lifting and moisturizing, increasing skin elasticity and firmness, stimulating the growth of collagen fibers, wrinkle correction, improving complexion.

**How to:** apply the mask onto the entire face and neck for 15-20 minutes, without rinsing, apply an alginate mask on top.

**\*Recommendations:** do a 10-minute massage with vacuum cups or using any other scheme at the discretion of the beautician.

### 6. Deep moisturizing and rejuvenation: Algae Mask

**Goals:** soothing, deep moisturizing, restoration and activation of metabolic processes.

**Способ применения:** apply the Alginate mask diluted with cold water to the frame made of a wet gauze mask with an even, dense layer, after 10-13 minutes remove the mask and its residues with toner or warm water.

### 7. Protection and moisturizing: Moisturizing Cream Vitamin C SPF25

**Goals:** moisturizing, UV protection, smoothing wrinkles, restoring tone and elasticity.

**How to:** apply the product onto the dry skin of the face, neck, and décolleté, avoid eye area.

Duration of the session - 60-75 minutes.

Course - 5-8 sessions; 1 session per week for the first 2-4 weeks, then 1 session every per month.

# Homecare protocol

STEP	CATALOG #	PRODUCT	FUNCTION	VOLUME
1	4040250	Multifruit Cleansing Gel	cleansing, skin renewal, makeup and impurities removal	250
2	7050250	Fresh Toner Vitamin C	cleansing, moisturizing, preparing the skin for active ingredients	250
3	6010030	Vitamin C Firming Serum	pronounced antioxidant effect, prevention of wrinkle smoothing, increased elasticity, improved complexion	30
4	1090050	3A Renewal Complex	pronounced antioxidant effect, prevention of wrinkle smoothing, increased elasticity, improved complexion	50
5	1100050	Moisturizing Cream Vitamin C SPF25	UV protection, antioxidant effect and deep hydration	50
6	2040100	Golden Tense Mask	moisturizing, smoothing wrinkles, restoring skin elasticity and firmness, evening skin color, preventing aging	100

## Multifruit Cleansing Gel

**How to:** in the morning and evening, apply the cleansing agent with massage movements, rinse with water.

## Fresh Toner Vitamin C

**How to:** in the morning and evening, thoroughly wipe the skin of the face, the area around the eyes, neck and décolleté with cotton swabs soaked in the product.

## Vitamin C Firming Serum

**How to:** every night before sleep, apply the booster all over the face.

including the eye area, on top, apply retinol cream until completely absorbed.

## Golden Tense Mask

**How to:** 2-4 times a week apply the mask with a dense layer all over the face, including the area around the eyes, for 6-10 minutes, rinse with warm water.

## 3A Renewal Complex

**How to:** every night before sleep, apply the cream all over the face, including the eye area, until completely absorbed.

## Moisturizing Cream Vitamin C SPF25

**How to:** apply onto the skin of the face, neck, and décolleté, avoid eye area every morning.

# SensoCalm

Sensitive skin and rosacea

Clients with sensitive skin are a real challenge for every beautician. Such skin has low tolerance and is hyper-reactive to external stimuli. Its epidermis is more water-permeable, which indicates the impaired barrier functions of the stratum corneum. Therefore, microorganisms and their toxins, water-soluble allergens and other substances are more likely to reach the layer of living cells of the epidermis, leading to a decrease in skin tolerance. Various external factors, i.e. wind, cold or active components of cosmetics, quickly cause its redness, itching or swelling.

That is why such skin often has signs of rosacea: a persistent dilation of small vessels of the skin in the form of spider veins.

## Any type of skin can be sensitive

Skin subtypes in aesthetic medicine

- |                    |                        |
|--------------------|------------------------|
| <b>O</b> Oily      | <b>D</b> Dry           |
| <b>P</b> Pigmented | <b>N</b> Non-pigmented |
| <b>S</b> Sensitive | <b>W</b> Wrinkled      |
| <b>T</b> Taut      | <b>R</b> Resistant     |

Sensitive skin syndrome can have a variety of clinical symptoms. They can be classified as subjective, according to the feelings of the client, and objective, clearly visible to the beautician and spectroscopically detectable.



## Subjective symptoms

- Itching
- Burning sensation
- Tingling sensation
- Feeling of tightening
- Fever
- Paresthesia

## Objective symptoms

- Mild inflammation
- Hyperemia, peeling, swelling
- Dilated peripheral vessels
- Dehydration
- Age spots
- Thinning of the epidermis, reduction of lipids and ceramides
- Slower regeneration of corneocytes
- Impaired sebum production
- pH shifts
- Rash, up to a full-blown dermatitis

## Sensitive skin syndrome triggers:

- Stress

The dysfunction of the neuroreceptor apparatus of the skin increases sensitivity and promotes the activity of the nerve growth factor (NGF).

- Genetic and physiological characteristics

Advanced and chronic skin conditions (dermatitis, dermatoses, rosacea, psoriasis, etc.) Impaired skin barrier (thinning, low moisture content of the stratum corneum), high transepidermal water loss (TEWL), decreased sphingolipid content.

Development of Sensitive skin symptoms associated with the menstrual cycle or menopause.

- Skin conditions

Atopic, allergic dermatitis, rosacea. Thus, the Sensitive skin syndrome pathogenesis involves the main interconnected mechanisms, i.e. impaired barrier functions and neuroreceptor apparatus of the skin and inflammation caused by skin disorders.

- Environmental factors

Cold, wind, temperature swings, UV radiation, dry air. Thus, UVB radiation can induce the expression of vascular endothelial growth factor, the main source of which in the skin are keratinocytes, and also increase the production of pro-inflammatory cytokines.

- Food irritants

Caffeinated and alcohol drinks, spicy food, which increase the reactivity of blood vessels.



## Recommended treatments:

- microcurrent therapy
- lymphatic drainage
- IPL laser treatment
- thermal lifting: stimulates collagen production and tightens the vessel walls. thermal lifting tightens the skin and thus makes rosacea signs less visible
- alginate masks

The most "sensitive nature" skin areas are those with either anatomically too thin skin, or lost or weakened lipid barrier. An example of such areas are the nasolabial area and the area around the eyes, chin, forehead, upper lip, and zygomatic arches.

Sensitive skin is considered as a manifestation of a sensitive personality at a biological level. High sensitivity often goes hand in hand with increased anxiety, fear of new situations, etc. When working with sensitive clients, the beauty professionals should avoid criticism, value judgments, and manifestations of superiority. Thus, understanding the client's response to a disease will help make the union more effective, contributing to the psychological well-being of both participants. To achieve the best results, it is advisable to add a relaxing, soothing massage to the treatment program and recommend the client to diversify home skin care with the Renaissance self-massage.

## Treatments to avoid:

- vacuum cleansing
- overheating/overcooling (including facial steaming)
- peeling scrubs with apricot pits or hard abrasive particles
- film, fast-drying, steaming, and paraffin masks
- wrong home skin care products

The essence of sensitive skin care can be phrased as follows: less aggression, only gentle and delicate care. People with sensitive skin must entrust their face only to an experienced beautician and add an anti-couperose course for sensitive skin to their care program at least twice a year.





## Active ingredients:

Active ingredients of the cosmetic products can be conditionally divided into several functional groups. The first includes ingredients that reduce irritation, eliminate inflammation, even out the complexion and structure of the skin. The second includes ingredients that strengthen the walls of blood vessels, enhance the elasticity of the capillary walls, reduce their permeability and improve blood circulation. A separate group consists of ingredients that help moisturize the skin and prevent trans-epidermal moisture loss, as well as ensure the effective delivery of active substances and vitamins.

The basis of the SensoCalm series for sensitive skin is a synergistic combination of active ingredients of natural extracts.

- **Agascal**

is an active ingredient derived from *Agastache Mexicana* (also called Purple Melissa or Giant Mexican Hyssop). *Agastache Mexicana* is a natural medicinal plant grown in Mexico. It is rich in flavonoids with pronounced anti-inflammatory effect. Avoids exposure of psychological stress to the skin that causes skin redness. Can reduce cellular inflammation. The ingredient is suitable for sensitive skin, helps to restore barrier functions, improve radiance and skin tone.

The lifestyle of modern society makes our brain daily suffer from various psychological stress. The stress in turn affects our skin in the form of inflammation, redness, worsened skin tone, etc.

Mexican hyssop extract helps to neutralize the negative effects caused by psychological stress on the skin. The contained tannins, vitamins K and P improve the capillary tone. Organic acids, vitamin C and minerals help to restore the barrier function of the skin, improve its hydration.

- **Exotic Tazman Pepper extract**

has powerful anti-inflammatory, anti-allergic and antimicrobial effect. The extract contains a significant amount of antioxidants, a mineral complex of bioavailable magnesium and zinc.

The active ingredient, rutin, is an anti-inflammatory agent that strengthens the capillaries. Tazman Pepper extract relieves itching, burning, and skin redness, and helps to make the skin radiant.

- **Polyplant Perfeskin**

is a mixture of extracts of medicinal herbs: horse chestnut, arnica, witch hazel, ivy, grape leaves, St. John's wort. It is a vein tonic, that is, a drug that strengthens the walls of blood vessels, regulates lymph and blood circulation, improves the vascular and capillary tone, and prevents blood clots.

It has an anti-inflammatory effect, soothes sensitive and irritated skin.

- **Dipotassium Glycyrrhizate**

is an active ingredient derived from licorice extract (licorice). Contains saponins, tannins, flavonoids, which are analogs of vitamin P. The anti-inflammatory effect of dipotassium glycyrrhizate is provided by inhibition of the active enzyme, hyaluronidase. This enzyme is activated during inflammation, participates in the destruction of connective tissue and increases the permeability of cell membranes.

In addition to the anti-inflammatory effect, dipotassium glycyrrhizate stimulates the formation of collagen fibers, actively prevents the deepening of existing wrinkles and prevents new ones, helps to lighten and even out the skin tone.

- **Activys Redout**

is an innovative active ingredient specially formulated for the sensitive and sensitized skin care. It regulates and normalizes the skin's immune system, strengthens the skin's barrier function, and reduces facial redness.

The product is a capsule of phospholipids containing extracts of turmeric root and Mediterranean pine bark. Being the main structural component of cell membranes, phospholipids are well absorbed by the skin. Due to the efficient delivery system (liposome capsules), the active ingredients easily penetrate the skin barrier. For a short time, they help to reduce the severity and area of redness.

Extracts of turmeric root and pine bark have a strong antioxidant effect, restore and cleanse the skin well, help to quickly relieve irritation and soothe the skin, have an anti-inflammatory effect, improve blood microcirculation in the tiniest blood vessels and capillaries, and improve collagen synthesis.

- **Allantoin**

is known for its beneficial effects on the skin: it helps heal wounds, relieve skin irritations, and stimulate the growth of healthy cells. It has keratolytic, soothing, and healing effects, stimulates epidermal renewal, neutralizes the harmful effects of free radicals, helps to heal minor wounds and strengthens healthy skin.

- **Aquaxyl**

is a compound of a powerful humectant of wheat-derived glucose and wood-derived xylitol that binds free liquid. It is a multifunctional moisturizing and regenerating complex of natural and plant origin. Aquaxyl increases the moisture reserves in the epidermis and prevents transepidermal water loss, improves skin texture and hydration, gives it elasticity, reduces flaking and smooths skin microrelief.

- **Rutin (Incapsulated)**

encapsulated rutin (Vitamin P), is a flavonoid with antioxidant and photoprotective effects. It strengthens the capillary walls, reducing their permeability and fragility, which leads to a decrease in the signs of spider (rosacea) veins. The encapsulation method preserves the rutin effects until its release in the skin.

- **Lactobionic Acid**

also called lactobionic "summer" acid, refers to polyhydroxy acids. A skin-related component. It has a positive effect on the dermal matrix by inhibiting the destruction of collagen and elastin. Provides deep and long-lasting hydration. Has a light exfoliating effect and accelerates regeneration of the epidermis. Helps fight photoaging. It is used when it is necessary to simultaneously remove keratinized masses and deeply nourish the skin. Non-toxic. A strong antioxidant. Due to its relatively large weight, it penetrates the skin more slowly without injuring it.

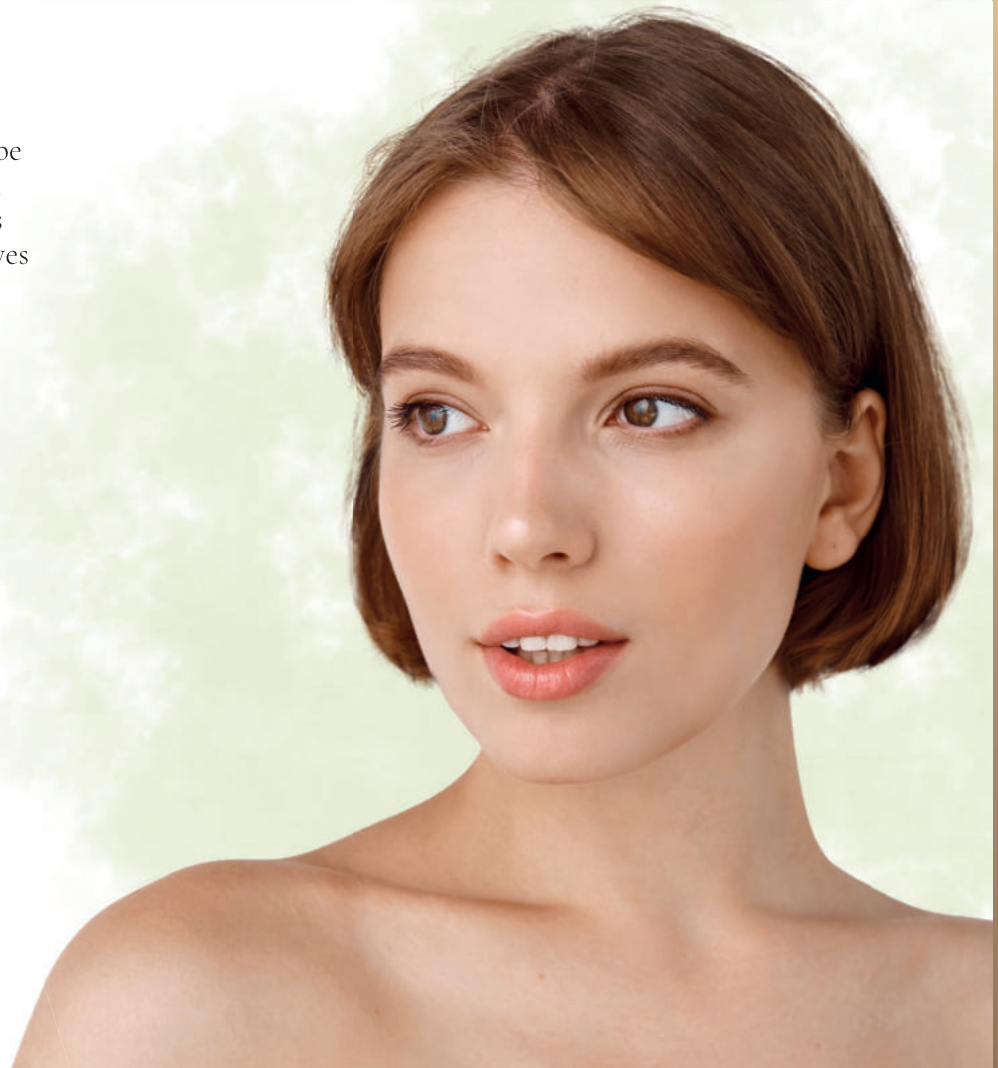
- **Gluconolactone**

is a polyhydroxy acid that has AHA-acid similar biological effect but with a number of advantageous differences. Due to five hydroxyl groups instead of one in ANA, it has more pronounced moisturizing effects. Does not irritate the skin, as it penetrates slowly, causing no burning sensation. Natural antioxidant, comparable in activity to ascorbic acid and tocopherol. It protects elastin and collagen fibers, provides a high level of antioxidant and photo-protection, moisturizes the skin, evens out its color and relief. Has an anti-inflammatory effect. Regulates the natural keratinization of the skin.

Due to the absence of irritating effect, gluconolactone-containing peels do not require neutralization and can be done quite often until a noticeable effect. When used in peeling solutions or cosmetics, gluconolactone increases skin hydration, smooths fine wrinkles and folds, improves skin elasticity, evens out skin tone due to keratolytic action, removes roughness, and narrows pores. Does not cause irritation or sensitization to skin and mucous membranes.

- **Calmosensine**

is a so-called “wellness peptide”. It reduces the skin sensitivity to irritants (thermal, mechanical and chemical).



- **Rosemary**

contains rosmarinic acid, which provides a rejuvenating effect due to its antioxidant properties. Rosemary has a beneficial effect on dry, problematic, and aging skin, improves blood circulation and stimulates regeneration, promotes effective wound healing and skin recovery after damage, eliminates irritation, renews, restores skin complexity and healthy texture, and has a disinfectant effect. Tones, smooths fine wrinkles, relieves swelling. Has astringent and antiseptic properties, which is beneficial for acne-prone skin. Rosemary antioxidants whiten skin, even out its complexion, lighten pigmentation and post-acne spots. Rosemary normalizes the functioning of the sweat glands in case of problem skin with acne and hyperkeratosis, tightens pores, improves skin complexion and makes the skin healthy and radiant. Helps smooth wrinkles, strengthen capillaries and moisturize the skin.

- **Aloe Vera gel**

is a natural complex of biologically active substances such as polysaccharides, flavonoids, catechins, tannins, amino acids, vitamins, enzymes, minerals, and trace elements. Aloe Vera has a moisturizing, anti-inflammatory, antifungal, regenerating, photoprotective, and antimicrobial effect on the skin. Penetrating into the skin, Aloe Vera gel stimulates capillary blood circulation, promotes the production of collagen, enhances cells regeneration in various skin diseases, slows down the appearance and reduces the number and size of age spots. Aloe Vera gel is suitable for dry, sensitive, inflammation-prone skin, as well as for acne and oily seborrhea.

- **Olive Oil**

is the most balanced vegetable oil with an ideal formula that best matches the fatty components of the human body. Its unique harmonious composition allows the oil to be fully absorbed and penetrate deeply at the cellular level. The oil is rich in almost all microelements necessary for the skin: vitamins, unique carotenoids, tocopherols, phytosterol hydrocarbons. Absolutely non-comedogenic oil is quickly absorbed, leaving no oily sheen, facilitating the transport of active ingredients to the deep skin layers, restoring, nourishing and moisturizing it. It is the most suitable component for sensitive, reactive, and aging skin. It acts on the epidermis, promptly relieving symptoms and discomfort and quickly improving the condition, while penetrating deeply into the layers of the skin and promoting its systemic recovery. One of the most effective oils that soften and retain moisture in skin cells, creating a protective barrier that does not interfere with active local metabolic processes. While applied to damaged areas, has a general soothing, disinfecting, and tissue healing effect.

- **Jojoba Oil**

has unique soothing properties. Moisturizes, nourishes, and restores damaged skin, relieves irritation and redness, stimulates the regeneration of skin cells.

- **Camelina oil**

is especially rich in proteins, vitamins and unsaturated acids, which makes it a vegetable source of vitamin E. It is a strong antioxidant. The oil refreshes and improves skin elasticity, restores water and fat balance, increases the protective functions of the skin, has wound healing effects. Promotes smoothing of wrinkles, prevents inflammation.

- **Rose Hydrosol**

perfectly softens and moisturizes the skin, relieves irritation and inflammation, accelerates wound healing, regenerates and rejuvenates the skin, activates blood circulation, strengthens blood vessels and capillaries, which makes it an indispensable tool for rosacea-prone skin care.

- **Phytic Acid**

is one of the most effective natural antioxidants. Has a lightening effect on the skin, prevents inflammatory reactions, inhibits the formation of pigment, stimulates the processes of skin renewal.

- **Bisabolol**

is a natural anti-inflammatory ingredient derived from chamomile. Soothes sensitive and irritated skin, reduces redness of damaged skin, protects the skin from external stresses.

- **Niacinamide**

is a soluble vitamin B3. Niacinamide is an extremely potent anti-aging agent with excellent skin compatibility. It improves the barrier function of the skin, has a positive effect on skin symptoms by reducing skin redness, enhances the resilience of sensitive skin, improves the skin complexion and texture by promoting collagen synthesis. It is also an effective skin whitening agent that makes age spots disappear and lightens the skin.



- **D-panthenol**

is a vitamin B. Its deficiency affects the entire functioning of the body, in particular lipid metabolism, which in turn worsens the condition of the skin. This can lead to various skin disorders, such as cracks in the corners of the lips, early wrinkles and pigmentation. D-panthenol normalizes lipid metabolism and promotes the redox process. Vitamin B5 is also involved in providing carbohydrate and protein metabolism, helps the absorption of other vitamins. When applied externally, D-panthenol promotes the regeneration of the skin and mucous membranes. Relieves irritation, promotes wound and cut healing. Accelerates cell metabolism and strengthens collagen fibers. Relieves itching and burning. Has anti-inflammatory properties. Helps moisturize the deep layers of the skin. Reduces the negative effects of UV radiation.

- **Hyaluronic Acid**

high and low molecular weight hyaluronic acid, improves the appearance of dry or damaged skin, reducing flaking and restoring elasticity, and smooths wrinkles. Usually found in skin, connective and nervous tissue. Compared to other natural and synthetic polymers, hyaluronic acid is the best to retain water. High molecular weight acid creates a microfilm on the skin surface, prevents transepidermal water loss (TEWL). Low molecular weight acid easily penetrates into the deep layers of the epidermis, absorbs moisture, smoothing and filling wrinkles from the inside.



## Delicate Face Milk

# 1110250

The milk is used for facial cleansing from impurities and decorative cosmetics, preparing the skin for further care, thereby increasing its effectiveness. Contains mild SLS-free surfactants. Effectively and gently cleanses, soothes sensitive skin, reduces redness, and does not dry out the skin.

Natural surfactants soothes the skin due to the content of olive and jojoba oils, as well as a complex of plant extracts of arnica, horse chestnut, witch hazel, ivy, St. John's wort, and rosemary.

Thus, in addition to gentle and thorough cleansing of sensitive skin, the cleansing milk strengthens and protects blood vessels, stimulates blood circulation, and has anti-inflammatory effect. Has anti-inflammatory effect.

**How to:** apply onto the skin of the face with cotton pads, massage gently. Rinse off the milk and makeup with warm water.

**Active ingredients:** Polyplant Perfeskin Rosemary, Aloe vera, Olive Oil, Jojoba Oil



## Soothing Cleansing Gel with Agascal™

# 4050250

The cleansing gel is used to cleanse the sensitive skin of the face and prepare it for further care. Natural soft surfactants, decyl glucoside and coconut oil betaine, gently and thoroughly cleanse the skin, causing no irritation or allergic reactions.

The cleansing gel contains Tazman Pepper extract, Agastache Mexicana, aloe extract and Aquaxyl active complex.

**How to:** spread a small amount of the product on moistened skin, massage for 2-3 minutes, then rinse the foam with warm water.

**Active ingredients:** Aloe Vera, Agascal, Olive Extract, Allantoin, Aquaxyl



## Perfect Skin Rose Toner

# 7060250

An alcohol-free toner with a mild formula gently removes makeup from the face and eyelids, delicately cleanses the sensitive skin of impurities and sebum, moisturizes and refreshes the skin, improves its complexion.

Active ingredients of the product soothe the skin, reduce its redness and reactivity, and restore the barrier function of the skin.

Rose and rosemary hydrolates make the basis of the toner, enhanced with Agascal and a complex of plant extracts.

Hydrolates derived from plant raw materials by steam distillation contain bioflavonoids, vitamins, organic acids, and glycosides.

Rose hydrolate enhances the sensualism and sensitivity of the skin to tactile effects. Being an aphrodisiac, it promotes stress relief and relaxation.

Rosemary hydrolate has a firming and tonic effect on the vascular system of the skin, improves local blood circulation.

The lotion facilitates the penetration of nutrients deep into the skin, moisturizes the skin and restores the water balance of the epidermis, as well as contributes to its saturation with useful components.

**How to:** Spread a small amount of the product evenly with cotton pads on the face and neck along the massage lines, do not rinse.

The product can be also used as a compress mask: to do this, soak a gauze napkin with the product and apply it on your face for 5-10 minutes.

**Active ingredients:** Rose Hydrosol, Rosemary Extract, Polyplant Perfeskin, Agascal





## GLB SensaPeel

# 3060050

pH -3-3.5 /Acids - 25%

GLB peeling is a highly effective product containing a combination of polyhydroxy acids (Gluconolactonic and Lactobionic), enhanced with phytic acid.

Due to their high molecular weight, polyhydroxy acids penetrate the skin slowly, staying exclusively in the stratum corneum of the epidermis, without provoking irritation and inflammation. These acids gently exfoliate the skin, perfectly moisturize it, stimulate the production of elastin and collagen, brighten the overall skin tone and even out its relief.

Effectively cleansing the stratum corneum of the skin, polyhydroxy acids promote the cell regeneration and strengthen the protective barrier of the skin.

Polyhydroxy acids are known for their ability to bind metal ions (the so-called chelating ability). This makes them powerful antioxidants that helps prevent photoaging.

The addition of phytic acid enhances the antioxidant properties of the peel and gives it additional beneficial properties, prevents inflammatory reactions and refreshes the skin complexion. Despite the high content of acids, GLB peeling neither requires neutralization nor increases the skin's photosensitivity. It is perfect for sensitive skin with signs of couperose and rosacea.

**How to:** Apply GLB peel (3-5 ml) with a brush or gauze pad evenly on the face, neck and décolleté, excluding the area around the eyes. Do a light massage in circular movements, wetting your fingers with peeling if necessary, for 3-6 minutes, do not rinse.

**Active ingredients:** Lactobionic Acid, Gluconolactone, Phytic Acid



# Peptide Calming Serum

# 5060100/5060030

Highly concentrated serum contains a combination of soothing and active ingredients for sensitive and irritative skin – Activys Redout, dipotassium glycyrrhizate, Agastache Mexicana, Tazman Pepper and panthenol, which rapidly restore a healthy look of the skin and strengthen its barrier functions.

Low molecular weight hyaluronic acid quickly penetrates the skin, has a regenerating effect, and helps maintain normal water balance in cells.

Calmosensine peptide complex reduces various skin reactions to external stimuli. It is a powerful regulator of skin sensitivity. Calmosensine reduces the negative reaction of the skin to oxidative processes. It promotes the production of “happy hormones”, endorphins and enkephalins, which have a beneficial effect on the cells of the dermis. The effect of endorphins lightens, evens out, softens and tightens the skin.

**How to:** apply the peptide serum mornings and evenings with a thin layer on clean face, including the areas around the eyes.

**Active ingredients:** Activys Redout, Agascal, Tazman Pepper, Calmosensine, D-panthenol, Dipotassium Glycyrrhizinate, Hyaluronic Acid



## Redout Calming Balm

# 1130050

An effective concentrated balm for sensitive, rosacea-prone skin has a delicate lamellar texture and is perfectly absorbed by the skin, leaving no sticky feeling.

The lamellar texture consists of continuous lipid layers alternating with water ones. This kind of emulsion can literally "build in" into the skin and thus restore its integrity.

Regular use of the balm strengthens the walls of blood vessels, stimulates blood circulation, improves metabolic processes in skin cells, makes spider veins less visible and reduces inflammatory reactions.

The balm is known for its innovative system for the delivery of active components - extracts of turmeric root and pine bark, placed in phospholipid membranes and rutin microcapsules.

Rutin (or vitamin P), together with vitamins C and K contained in curcumin, has a beneficial effect on blood vessels and capillaries. It strengthens the vascular walls, reduces capillary fragility and permeability, and prevents congestion. Calmosensine peptide complex together with panthenol helps to quickly soothe irritated skin.

The effect of vitamins P, C, and K on sensitive skin is enhanced by niacinamide, vitamin E and Polyplant Perfeskin, a complex of plant extracts, in the balm.

**How to:** apply the balm mornings and/or evenings with a thin layer on clean face.

**Active ingredients:** Rutin (Incapsulated), Calmosensine, Activys Redout, Polyplant Perfeskin, Dipotassium Glycyrrhizinate, Niacinamide, Camelina oil



## OliVera Gel

# 5050500/505010

A unique combination of olive and aloe extracts immediately soothe the skin, relieving all types of irritations and burns. Combines the anti-inflammatory and moisturizing properties of aloe extract with the soothing and antioxidant properties of olive leaf extract.

Due to its anti-inflammatory properties, aloe extract reduces redness, accelerates cell regeneration, perfectly soothes the skin and prevents dehydration. OliVera gel has a light texture, is immediately absorbed, leaving no sticky feeling, and does not contain any fragrances.

**How to:** If necessary, apply a thin layer of OliVera gel onto clean skin, every 2-4 hours for a week, until its complete recovery.

**Active ingredients:** Olive Extract, Aloe Vera, Panthenol, Allantoin



## Recovering Olive Cream

# 1120250/1120050

The cream has an extra delicate texture, is well distributed over and perfectly absorbed by the skin, making it soft and silky. Perfectly soothes the skin, relieves redness, restores the barrier properties, relieves itching, and moisturizes the skin. Does not contain fragrances and dyes, non-comedogenic and hypoallergenic.

The oily phase of the cream consists of completely natural derivatives of olive oil and camelina seed oil, rich in vitamin E and amino acids. The cream contains a whole range of soothing, anti-irritation components (Tazman Pepper, allantoin, panthenol, dipotassium glycyrrhizinate). The peptide complex, acetyl dipeptide, Calmosensine, effectively reduces the sensitivity of the skin to irritating factors (thermal, chemical, mechanical), softens it, and reduces various skin reactions to external irritants. Calmosensine stimulates the synthesis of endorphins called "happy hormones", providing the skin with a sense of comfort. We also recommend it for irritated skin with signs of psoriasis, seborrhea, or eczema.

**How to:** apply a thin layer after shower or bath all over the body. Suitable for all types of skin, including inflamed, dry, flaky, and reactive skin.

**Active ingredients:** Agascal, Tazman Pepper, Polyplant Perfeskin, Olive, Dipotassium Glycyrrhizinate, Calmosensine, Camelina oil, Hyaluronic Acid



## Gentle Mask with Agascal™

# 2090250/2090100

The light texture of the mask makes the skin smooth and silky, evens out the skin tone. The mask contains a whole set of components that relieve psychological stress and inflammation caused by external irritating factors.

A high content of active ingredients, such as Tazman Pepper, Agastache Mexicana, dipotassium glycyrrhizate, bisabolol, panthenol, and corn starch, quickly eliminates redness, irritation, relieves inflammatory reactions, strengthens blood vessels, helps to reduce spider veins, actively moisturizes and eliminates the adverse effects of external factors.

**How to:** apply the mask 2-3 times a week, or whenever your skin needs to relieve irritation. Apply onto cleansed skin of the face and neck, leave for 10-15 minutes and rinse with water.

**Active ingredients:** Agascal, Tazman Pepper, Polyplant Perfeskin, Dipotassium Glycyrrhizinate, Allantoin, Bisabolol



# Protocol SensoCalm

Professional basic care program for sensitive, rosacea-prone skin

The professional line of SensoCalm natural cosmeceutical products and competent home care will help smooth the signs of rosacea and slow down the appearance of new spider veins. Basic care is based on a method of restoring and providing the skin with nutrition, protection from damage, oxygenation and activation of regenerative processes.

- restore the epidermal barrier and protective hydrolipid mantle
- increase skin hydration level
- block inflammatory processes
- increase the resistance and local immunity of the skin
- improve the elasticity of blood vessels and strengthen them
- reduce the risk of new spider veins

STEP	CATALOG #	PRODUCT	FUNCTION	VOLUME
1	1110250	Delicate Face Milk	Cleansing and moisturizing	250
2	4050250	Soothing Cleansing Gel with Agascalms	Makeup removal and cleansing. Skin preparation	250
3	7060250	Perfect Skin Rose Toner	Stress relief and toning	250
4	3060050	GLB Sensapeel	Peeling	50
5a	1130050	Redout Calming Balm	Anti-couperose and anti-stress treatment	50
5b	5050500	OliVera Gel		500
6a	1120250	Recovering Olive Cream	Anti-stress therapy, elimination of irritations, soothing of the skin	250
6b	2090250	Gentle Mask with Agascalms		250
7	5060100	Peptide Calming Serum	Anti-couperose and anti-stress treatment	100

### 1. Skin pre-cleansing and moisturizing:

#### Delicate Face Milk

Goals: reduce redness and inflammation of the skin during make-up removal, soothe and moisturize the skin.

How to: Apply the milk onto the skin of the face with cotton pads, massage gently. Rinse off the milk and makeup with warm water together with Soothing Cleansing Gel with Agascal™.

### 2. Makeup removal and soothing:

#### Soothing Cleansing Gel with Agascal™

Goals: delicately cleanse, soothe, and prepare sensitive skin for further procedures.

How to: spread a small amount of the product on moistened skin, massage for 1-2 minutes, then rinse the foam with warm water.

### 3. Stress relief and toning:

#### Perfect Skin Rose Toner

Goals: soften and soothe inflamed skin, reduce inflammation caused by external irritants and psychological stress.

How to: Spread a small amount of the product evenly on the face and neck along the massage lines. The product can be also used as a compress mask: to do this, soak a gauze napkin with the product and apply it on your face.

### 4. Peeling for the prevention and correction of sensitive skin changes:

#### GLB Sensapeel

Goals: Control of photoaging and antioxidant protection of the skin. Deep hydration smooths fine wrinkles and folds, improves skin elasticity, evens out skin tone due to keratolytic action, removes roughness, and narrows pores.

How to: Apply the peel (3-5 ml) with a brush or gauze pad evenly on the face, neck and décolleté, excluding the area around the eyes. Do a light massage in circular movements, wetting your fingers with peeling if necessary, for 3-6 minutes, do not rinse.

### 5. Electroporation or penetration:

#### Redout Calming Balm

#### + OliVera Gel

Goals: anti-couperose program, removal of psychological stress and inflammation of external irritating factors / immunomodulation of the skin facial electroporation by a combination of two drugs is used to:

- eliminate dryness, flaking, itching, and redness;
- strengthen vascular walls;
- soothe, restore facial skin and stimulate the regeneration of skin cells

How to: apply anti-couperose active cream-balm with curcumin with a brush onto the face, neck, and décolleté. Massage with light circular motions, until completely absorbed, do not rinse. Apply an even medium layer of a soothing gel with olive and aloe on top with a brush and do a 10-13-minute electroporation session, do not rinse.

**6. Anti-stress therapy with soothing massage: recommended with the "Spanish" or "Renaissance" massage.**

**Recovering Olive Cream**

**+  
Gentle Mask with Agascal™**

**Goals:**

- eliminate redness and irritation of the skin
- reduce fragility and permeability of peripheral vessels
- promote skin regeneration and vascular strengthening
- the skin becomes hydrated, silky, and smooth
- relax and soothe

How to: apply the Recovering Olive Cream with a brush onto the face, neck, and décolleté.

Do a light massage for 15-20 minutes, do not rinse. Apply an even moderate layer of a soothing mask with Agastache Mexicana extract for 15-20 minutes (as an option, continue with the relaxation massage together with the mask applied) We recommend to cover skin with a remodeling alginate mask with Vitamin C and Blackcurrant or an antioxidant sugar mask for 20 minutes and rinse off the face, neck, and décolleté with water.

**7. Finishing:  
Peptide Calming Serum**

How to: spread the peptide serum for sensitive skin all over the face and neck and leave it to absorb.

If the type of sensitive skin requires additional hydration / nutrition or during cold seasons, we recommend finishing the treatment with a regenerating olive cream.

The course is 4-8 sessions, 1 time in 8-12 days, 2 times a year during the exacerbation season (autumn and spring) The treatment can be positioned as an express care for the immediate elimination of irritations and/or as a course therapy.



# Homecare protocol:

Professional basic care program for sensitive, rosacea-prone skin

The professional line of SensoCalm natural cosmeceutical products and competent home care will help smooth the signs of rosacea and slow down the appearance of new spider veins. Basic care is based on a method of restoring and providing the skin with nutrition, protection from damage, oxygenation and activation of regenerative processes.

- restore the epidermal barrier and protective hydrolipid mantle
- increase skin hydration level
- block inflammatory processes
- increase the resistance and local immunity of the skin
- improve the elasticity of blood vessels and strengthen them
- reduce the risk of new spider veins

STEP	CATALOG #	PRODUCT	FUNCTION	VOLUME
1	1110250	Delicate Face Milk	Cleansing and moisturizing	250
2	4050250	Soothing Cleansing Gel with Agascalms	Makeup removal and cleansing. Skin preparation	250
3	7060250	Perfect Skin Rose Toner	Stress relief and toning	250
4	5060030	Peptide Calming Serum	Anti-couperose and anti-stress treatment	30
5	1130050	Redout Calming Balm		50
6a	1120050	Recovering Olive Cream	Anti-stress therapy, elimination of irritations, soothing of the skin	50
6b	2090100	Gentle Mask with Agascalms	Antistress	100
7	5050100	OliVera Gel	Reassurance	100



# Homecare

## 1. Makeup removal and moisturizing:

### Delicate Face Milk

How to: mornings and/or evenings, apply the milk onto the face with cotton pads, and massage gently. Rinse off the milk and makeup residues with Soothing Cleansing Gel with Agascalml and warm water.

## 2. Delicate skin cleansing:

### Soothing Cleansing Gel with Agascalml™

How to: mornings and/or evenings, spread a small amount of the gel, massage for 1-3 minutes, and rinse with warm water.

## 3. Stress relief and toning:

### Perfect Skin Rose Toner

How to: утром и вечером, небольшое количество препарата mornings and evenings, spread a small amount of the product evenly with cotton pads on the face and neck along the massage lines, do not rinse.

## 4. Strengthening, regenerative program:

### Peptide Calming Serum

How to: the peptide serum mornings and evenings with a thin layer on clean face, including the areas around the eyes. Apply the cream balm on top.

### Redout Calming Balm

How to: the balm mornings and/or evenings with a thin layer on clean face.

## 5. During the cold season or demi-season:

### Recovering Olive Cream

How to: mornings and evenings, apply a thin layer after shower or bath all over the face and body. Suitable for all types of skin, including inflamed, dry, flaky, and reactive skin.

## 6. Anti-stress, soothing therapy:

### Gentle Mask with Agascalml™

How to: apply the mask 2-3 times a week, or whenever your skin needs to relieve irritation. Apply to the clean skin, let it sit for 10-15 minutes, and then rinse with water.

# Moist Retention Algae Mask

MaskAlgae-based masks have plasticizing effect: they lift, fix and model the facial contours, and make a pronounced moisturizing effect.

Moist Retention Algae Mask improves blood and lymphatic drainage. It helps to remove toxins, lifts nutrients from deep to the upper layers of the skin encouraging their stimulation, regeneration, moisturizing, nutrition, and toning.

The mask reverses congestive phenomena, brightens the skin, relieves irritation, improves the delivery of active ingredients into the skin.

**How to:** mix the mask powder with water in a 1:3 ratio. Stir evenly until homogenized. Apply the mask on the face and the neck in an even and thick layer (2-5 mm) along the massage lines from bottom to top using a spatula on a prepared gauze frame moistened with water or a special tonic (see the instructions), and leave for 10-15 minutes.

Please note. The algae mask is plasticized within 2-4 minutes and cannot be used afterward! While using the mask on the neck and décolleté, use 1.5-2 times more powder and water proportionally.

**Ingredients:** The main ingredient of alginates is algic acid contained in Laminaria and Fucus algae. Algic acid is a polysaccharide that is a structural element of cell walls. It has a stimulating and toning effect, effectively moisturizes the skin, enhances natural protective functions, activates blood circulation, and improves metabolism, slowing down the premature skin aging.



## Diatomaceous earth (diatomite)

is a natural product formed by the fossilized remains of diatoms. Diatomite, known for its antibacterial effect, normalizes the skin mineral composition, and activates metabolic processes. It restores water balance, improves skin tone, activates microcirculation, and enriches skin with microelements.

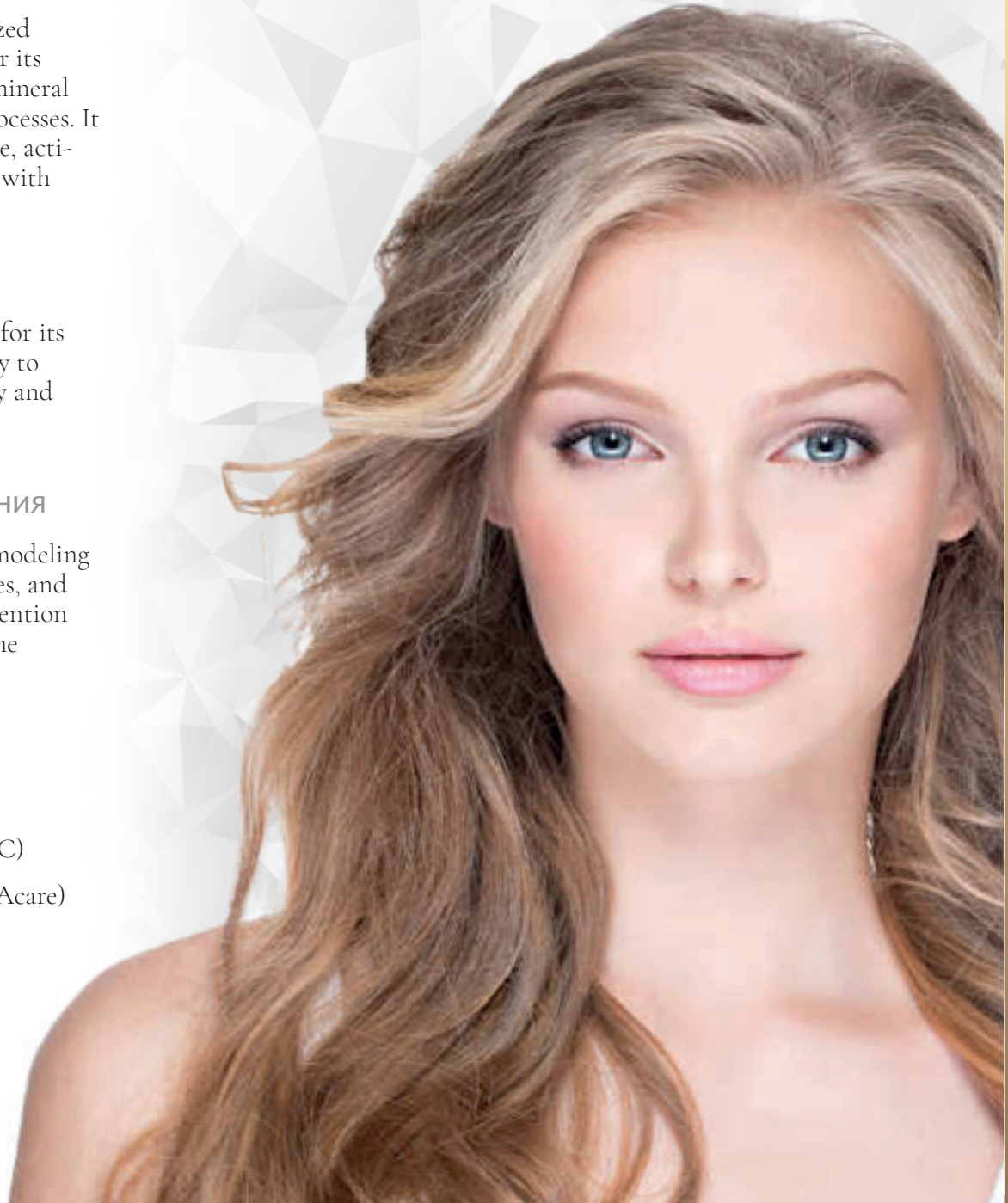
## Xanthan gum

is a natural polysaccharide that is known for its protective properties, as well as the ability to smooth the skin, by restoring its elasticity and maintaining water-fat balance.

## Сульфат кальция и окись магния

provide structural strength of the mask, modeling face contours, smoothing out fine wrinkles, and enhancing metabolic processes. Moist Retention Algae Mask is best as the final stage for the following cosmetic procedures:

- 1 HydroProtect deep hydration and skinprotection program
- 2 Anti-stress skincare and wellness(HydroProtect and ReAL-C)
- 3 Lymphatic drainage treatment (SPAcare)
- 4 Hollywood deep cleaning procedure (vacuum hydro peeling and hydrodermabrasion)



# Vitamin C Remodeling Algae Mask with Blackcurrant

A universal combined regenerative mask revitalizes, rejuvenates, and moisturizes the skin. Rich in vitamin C, sugars, minerals, and organic acids extract of blackcurrant, the mask provides a regenerating and antioxidant effect. Thanks to its rich composition the mask actively vitaminizes the epidermis, enhances the skin protective functions, stimulates the metabolism in cells, tightening face contours, and giving the skin a radiant and healthy appearance.

**How to:** mix the mask powder with water at a 1:3 ratio. Stir evenly until homogenized. Apply the mask on the face and the neck in an even and thick layer (2-5 mm) along the massage lines from bottom to top using a spatula on a prepared gauze frame moistened with water or a special tonic (see the instructions), and leave for 10-15 minutes.

Please note. The algae mask is plasticized within 2-4 minutes and cannot be used afterward! When using the mask on the neck and décolleté, use 1.5-2 times more powder and water proportionally.

**Ingredients:** The flavonoid, quercetin, contained in the blackcurrant extract prevents the damaging effect of free radicals, slows down the processes of lipid peroxidation of cell membranes.

## Quercetin

is a natural inhibitor of hyaluronidase, an enzyme that increases vascular wall permeability. This helps the blackcurrant extract to reduce the permeability and fragility of capillaries, improves microcirculation.

## Vitamin C

is a first-class antioxidant that improves vascular elasticity, stimulates collagen synthesis, prevents the formation of carcinogens, regenerates the skin, enhances blood microcirculation, photoprotection, protects against harmful effects, and prevents aging. It strengthens tissues, makes skin elastic, has anti-inflammatory and anti-allergic effects.



## Diatomaceous

earth consists of fos-silized remains of diatoms with a high content of flint. It thoroughly removes dead skin tissue cells, tightens pores, and thus prevents acne.

Vitamin C Remodeling Algae Mask with Blackcurrant is best suited as the final stage for the following cosmetic proce-dures:

- 1 30+ anti-aging with the ReAL-C series
- 2 30+ lifting care and express effect (proce-dures with the ReAL-C series)
- 3 Sensitive and rosacea-prone skin pro-grams.
- 4 50+ DNA anti-aging program
- 5 Photorejuvenation is a non-injection, hardware rejuvenation technique based on intense pulsed irradiation of the skin with IPL.
- 6 Laser biorevitalization (non-injection) is the application of a special composition based on hyaluronic acid on the skin, fol-lowed by the use of cold laser beams to help useful substances penetrate into the epidermis.
- 7 Dermapen (non-injection mesotherapy) is a fractional micro-needle mesotherapy.
- 8 All types of lifting procedures based on ionophoresis, ultraphonophoresis, magnetophoresis, electrophoresis or electro-poration, cryomesotherapy, and oxygen mesotherapy.



# Detoxifying Algae Mask with Tea Tree & Willow extract

In professional care the mask is used to treat acne and oily skin, perfect for oily and combined skin with inflammation. Has an active sebum control effect, enriches the skin with minerals, removes toxins.

The mask has an absorbent and anti-inflammatory effect, regulates the activity of the sebaceous glands. Tea tree oil helps to reduce inflammations.

**How to:** mix the mask powder with water at a 1:3 ratio. Stir evenly until homogenized. Apply the mask on the face and the neck areas in an even and thick layer (2-5 mm) along the massage lines from bottom to top using a spatula on a prepared gauze frame moistened with water or a special tonic (see the instructions), and leave for 10-15 minutes.

Please note. The algae mask is plasticized within 2-4 minutes and cannot be used afterward! While using the mask on the neck and decollete, use 1.5-2 times more powder and water proportionally.

**Ingredients:** Tea tree oil has strong antiseptic, antimicrobial and wound-healing effects, relieves skin inflammation, promotes cell regeneration.

## White willow bark extract

is rich in tannins and salicylates, has anti-inflammatory, antibacterial, keratolytic, and detoxifying properties, eliminates inflammations, soothes itchy and irritated skin.

## Minerals and amino acids of sea mud.

The mask is also rich in minerals and amino acids of sea mud. Biologically active components of sea mud normalize bio-chemical processes in skin cells, have antioxidant, anti-inflammatory, regenerating effects.



They stimulate immune system and the capillary network. The high content of minerals removes excess fluids and toxins from problem areas.

## Rice powder

actively absorbs the secreted sebum and prevents oily sheen on the face, has anti-inflammatory properties without disturbing the skin moisture balance, and does not clog pores letting your skin breathe.

Detoxifying Algae Mask with Tea Tree & Willow extract  
Best as the final stage for the following cosmetic procedures:

- 1 BalanCell for deep cleaning and normalization of sebaceous glands
- 2 PropioCare anti-acne program with peeling and reducing the number of inflammations.
- 3 IPL phototherapy. At the end of the phototherapy, it is recommended to apply Active Comedones Softener concentrate, a special active agent that promotes the dissolution of comedones, and a detoxifying algae mask.
- 4 Jacquet face massage (named after the French dermatologist). Massage helps to reduce the number of acne on the face skin, improving blood circulation and normalizing exchange processes, thereby dispersing purulent foci. Apply a detoxifying mask after massage.



# Antioxidant Sugar Peel-Off Mask with Forest Berries

Berries The unique combination of active components of forest berry extracts and sucrose provides exceptional effectiveness. The powerful antioxidant effect of the sugar mask actively counteracts free radicals, tones up, and perfectly moisturizes the skin, enhancing the skin barrier functions. The wonderful aroma and color of the mask bring aesthetic pleasure and evoke positive emotions when applied.

**How to:** mix the mask powder with water at a 1:3 ratio. Stir evenly until homogenized. Apply the mask on the face and the neck areas in an even and thick layer (2-5 mm) along the massage lines from bottom to top using a spatula on a prepared gauze frame moistened with water or a special tonic (see the instructions), and leave for 10-15 minutes.

Please note. The algae mask is plasticized within 2-4 minutes and cannot be used afterward! When using the mask on the neck and décolleté, use 1.5-2 times more powder and water proportionally.

**Ingredients:** Cranberry extract is rich in vitamins, organic acids, and phenolic compounds, has outstanding antioxidant and antimicrobial properties, strengthens and protects collagen fibers and promotes the synthesis of new ones, brightens the skin, preventing early aging of cells.

Strengthens, protects the existing and promotes the synthesis of new collagen fibers, brightens the skin, prevents early aging of cells.

## Vitamin C

Due to the high content of vitamin C and fruit acids, the wild raspberry extract has a regenerating effect on the skin under stress, promotes collagen production, and protects skin cells against the harmful effects of free radicals.





## Strawberry extract

is rich in sugars, which retain moisture in the epidermis. Polyphenols and vitamin C give antioxidant properties to the extract. Antho-cyanins reduce the fragility of blood capil-laries, increase their elasticity and make a beneficial effect on the venous system.

## Trace elements

contained in forest berry extracts contribute to the restoration of the structure of connective tissue, provide vital functions of the skin (barrier, protec-tive, respiratory, exchange, etc.).

Antioxidant Sugar Peel-Off Mask & Forest BerriesBest as the final stage for the following cosmetic procedures:

- 1 30+ anti-aging with the ReAL-C series
- 2 Sensitive and rosacea-prone skin pro-grams for sensitive skin, and skin with rosacea phenomena.
- 3 50+ DNA anti-aging program
- 4 HydroProtect deep hydration and skinprotection program
- 5 Anti-stress skincare and wellness (HydroProtect and ReAL-C)
- 6 All types of lifting procedures based on ionophoresis, ultraphonophoresis, magnetophoresis, electrophoresis or electroporation, cryomesotherapy, and oxygen mesotherapy.





+972507737304

[www.shor-professional.com](http://www.shor-professional.com)

[shorpro.office@gmail.com](mailto:shorpro.office@gmail.com)